

2017 2 所沢 # 4 44F



Oil Pattern Distance:	44 Feet	Reverse Brush Drop:	33 Feet	Oil Per Board:	50 uL
Forward Oil Total:	13.1 mL	Reverse Oil Total:	11.8 mL	Volume Oil Total:	24.9 mL
Forward Boards Crossed:	262 Boards	Reverse Boards Crossed:	236 Boards	Total Boards Crossed:	498 Boards

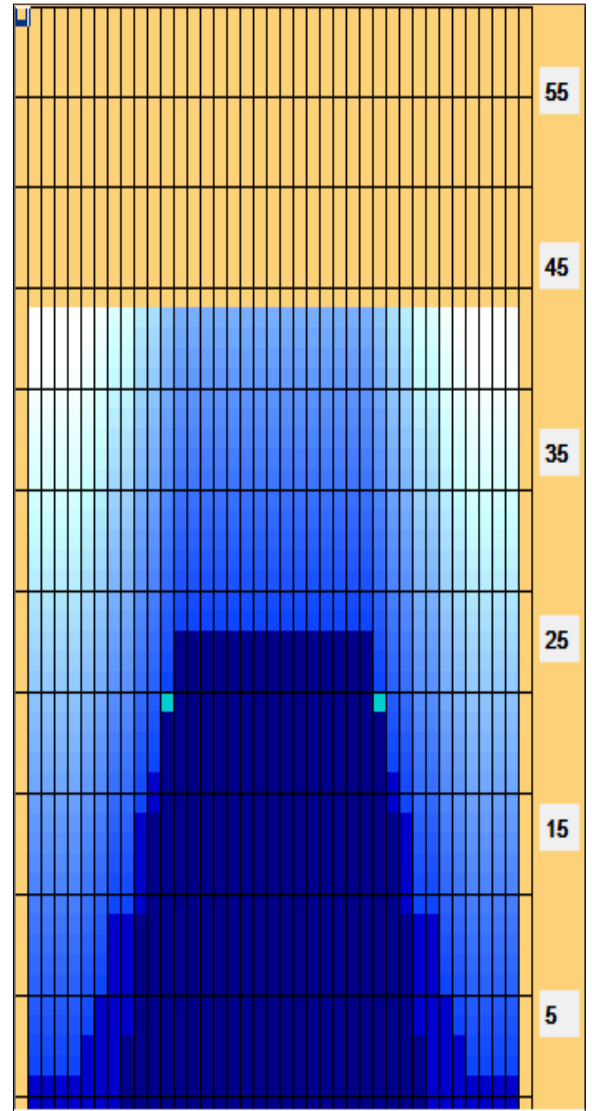
	Start	Stop	Loads	Speed	Crossed	Start	End	Feet	T.Oil
1	5L	5R	1	14	31	0.0	0.0	0.0	1550
2	6L	6R	1	14	29	0.0	1.9	1.9	1450
3	7L	7R	1	14	27	1.9	3.8	1.9	1350
4	9L	9R	2	18	46	3.8	8.9	5.1	2300
5	10L	10R	2	18	42	8.9	14.0	5.1	2100
6	11L	11R	2	18	38	14.0	19.1	5.1	1900
7	12L	12R	2	22	34	19.1	25.3	6.2	1700
8	13L	13R	1	22	15	25.3	28.4	3.1	750
9	2L	2R	0	26	0	28.4	36.0	7.6	0
10	2L	2R	0	30	0	36.0	44.0	8.0	0

	Start	Stop	Loads	Speed	Crossed	Start	End	Feet	T.Oil
1	2L	2R	0	30	0	44.0	28.0	-16.0	0
2	13L	13R	1	26	15	28.0	24.4	-3.6	750
3	12L	12R	1	22	17	24.4	21.3	-3.1	850
4	11L	11R	1	18	19	21.3	18.8	-2.5	950
5	10L	10R	2	18	42	18.8	13.7	-5.1	2100
6	8L	8R	2	14	50	13.7	9.8	-3.9	2500
7	7L	7R	1	14	27	9.8	7.9	-1.9	1350
8	6L	6R	1	14	29	7.9	6.0	-1.9	1450
9	2L	2R	1	14	37	6.0	4.1	-1.9	1850
10	2L	2R	0	10	0	4.1	0.0	-4.1	0

Conditioner:
Type In or Select One

TransferType:
Type In or Select One

- Forward
- Reverse
- Combined
- Buff



2月のフィート数は44Fです。
 久し振りにアウトの塗布量&板目を変更(減少)しました。
 先月より更にちょっと長めのハイスコアレーンになっています。

Item	3L-7L:18L-18R	8L-12L:18L-18R	13L-17L:18L-18R	18L-18R:17R-13R	18L-18R:12R-8R	18L-18R:7R-3R
Description	Outside Track:Middle	Middle Track:Middle	Inside Track:Middle	Middle: Inside Track	Middle:Middle Track	Middle:Outside Track
Track Zone Ratio	7.86	1.59	1	1	1.59	7.86

