

足利スターレーン 7・8月



Oil Pattern Distance:	43 Feet	Reverse Brush Drop:	43 Feet	Oil Per Board:	50 uL
Forward Oil Total:	14.65 mL	Reverse Oil Total:	6.75 mL	Volume Oil Total:	21.4 mL
Forward Boards Crossed:	293 Boards	Reverse Boards Crossed:	135 Boards	Total Boards Crossed:	428 Boards

	Start	Stop	Loads	Speed	Crossed	Start	End	Feet	T.Oil
1	2L	2R	1	18	37	0.0	0.0	0.0	1850
2	5L	5R	2	18	62	0.0	5.1	5.1	3100
3	9L	9R	2	18	46	5.1	10.2	5.1	2300
4	10L	10R	2	18	42	10.2	15.3	5.1	2100
5	11L	11R	2	22	38	15.3	21.5	6.2	1900
6	12L	12R	4	22	68	21.5	33.9	12.4	3400
7	2L	2R	0	22	0	33.9	43.0	9.1	0

Navigation: Forward Reverse More

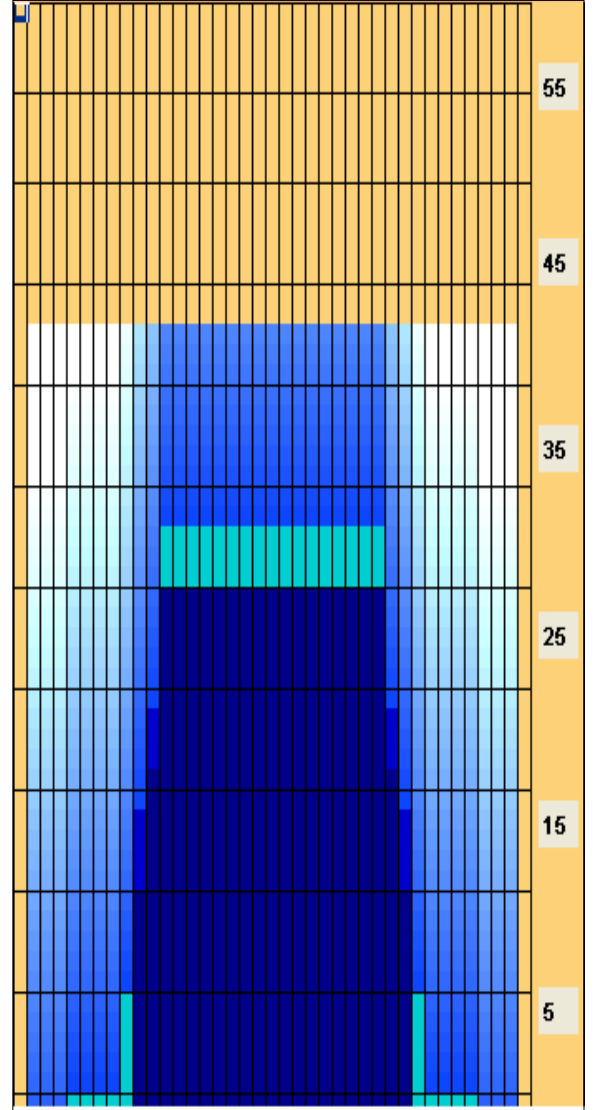
	Start	Stop	Loads	Speed	Crossed	Start	End	Feet	T.Oil
1	2L	2R	0	30	0	43.0	30.0	-13.0	0
2	12L	12R	2	22	34	30.0	23.8	-6.2	1700
3	11L	11R	2	18	38	23.8	18.7	-5.1	1900
4	10L	10R	3	18	63	18.7	11.1	-7.6	3150
5	2L	2R	0	14	0	11.1	0.0	-11.1	0

Navigation: Forward Reverse More

Conditioner:
Type In or Select One

TransferType:
Type In or Select One

- Forward
- Reverse
- Combined
- Buff



Item	3L-7L:18L-18R	8L-12L:18L-18R	13L-17L:18L-18R	18L-18R:17R-13R	18L-18R:12R-8R	18L-18R:7R-3R
Description	Outside Track:Middle	Middle Track:Middle	Inside Track:Middle	Middle: Inside Track	Middle:Middle Track	Middle:Outside Track
Track Zone Ratio	9.09	1.92	1	1	1.92	9.09

