

2025年8月～10月デイリーコンディション



Oil Pattern Distance: **43 Feet**
 Forward Oil Total: **14.15 mL**
 Forward Boards Crossed: **283 Boards**

Reverse Brush Drop: **40 Feet**
 Reverse Oil Total: **7.6 mL**
 Reverse Boards Crossed: **152 Boards**

Oil Per Board: **50 uL**
 Volume Oil Total: **21.75 mL**
 Total Boards Crossed: **435 Boards**

| Start | Stop | Loads | Speed | Crossed | Start | End | Feet | T.Oil |
|-------|---------|-------|-------|---------|-------|------|------|-------|
| 1 | 2L 2R | 1 | 18 | 37 | 0.0 | 0.0 | 0.0 | 1850 |
| 2 | 6L 6R | 2 | 18 | 58 | 0.0 | 5.1 | 5.1 | 2900 |
| 3 | 8L 8R | 2 | 22 | 50 | 5.1 | 11.3 | 6.2 | 2500 |
| 4 | 10L 10R | 2 | 22 | 42 | 11.3 | 17.5 | 6.2 | 2100 |
| 5 | 12L 12R | 3 | 22 | 51 | 17.5 | 26.8 | 9.3 | 2550 |
| 6 | 13L 13R | 3 | 22 | 45 | 26.8 | 36.1 | 9.3 | 2250 |
| 7 | 2L 2R | 0 | 14 | 0 | 36.1 | 43.0 | 6.9 | 0 |

Forward Reverse More

| Start | Stop | Loads | Speed | Crossed | Start | End | Feet | T.Oil |
|-------|---------|-------|-------|---------|-------|------|-------|-------|
| 1 | 2L 2R | 0 | 30 | 0 | 43.0 | 38.0 | -5.0 | 0 |
| 2 | 13L 13R | 3 | 26 | 45 | 38.0 | 27.0 | -11.0 | 2250 |
| 3 | 12L 12R | 2 | 26 | 34 | 27.0 | 19.7 | -7.3 | 1700 |
| 4 | 9L 9R | 2 | 22 | 46 | 19.7 | 13.5 | -6.2 | 2300 |
| 5 | 7L 7R | 1 | 22 | 27 | 13.5 | 10.4 | -3.1 | 1350 |
| 6 | 2L 2R | 0 | 14 | 0 | 10.4 | 0.0 | -10.4 | 0 |

Forward Reverse More

Conditioner:
Type In or Select One

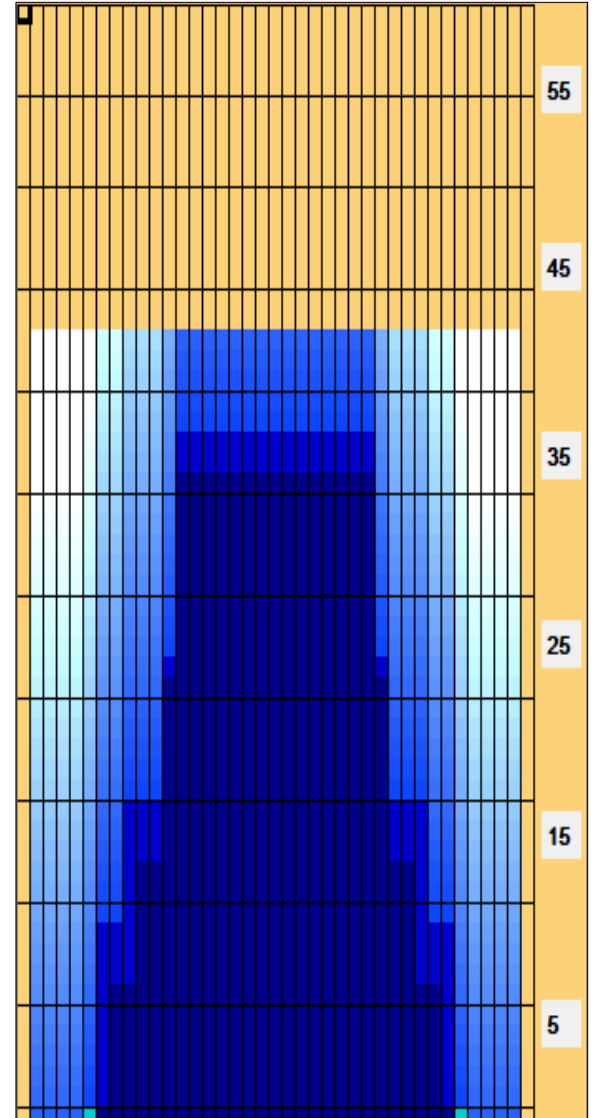
TransferType:
Type In or Select One

Forward

Reverse

Combined

Buff



| Item | 3L-7L:18L-18R | 8L-12L:18L-18R | 13L-17L:18L-18R | 18L-18R:17R-13R | 18L-18R:12R-8R | 18L-18R:7R-3R |
|------------------|----------------------|---------------------|---------------------|----------------------|---------------------|----------------------|
| Description | Outside Track:Middle | Middle Track:Middle | Inside Track:Middle | Middle: Inside Track | Middle:Middle Track | Middle:Outside Track |
| Track Zone Ratio | 10.5 | 2.14 | 1 | 1 | 2.14 | 10.5 |

