

Oil Pattern Distance: 39 Feet	Reverse Brush Drop: 32 Feet	Oil Per Board: 50 uL
Forward Oil Total: 15.85 mL	Reverse Oil Total: 9.35 mL	Volume Oil Total: 25.2 mL
Forward Boards Crossed: 317 Boards	Reverse Boards Crossed: 187 Boards	Total Boards Crossed: 504 Boards

	Start	Stop	Loads	Speed	Crossed	Start	End	Feet	T.Oil
1	2L	2R	2	18	74	0.0	2.5	2.5	3700
2	8L	8R	3	18	75	2.5	10.1	7.6	3750
3	9L	9R	3	18	69	10.1	17.7	7.6	3450
4	10L	10R	3	22	63	17.7	27.0	9.3	3150
5	11L	11R	1	22	19	27.0	30.1	3.1	950
6	12L	12R	1	22	17	30.1	33.2	3.1	850
7	2L	2R	0	26	0	33.2	39.0	5.8	0

Navigation: Forward Reverse More

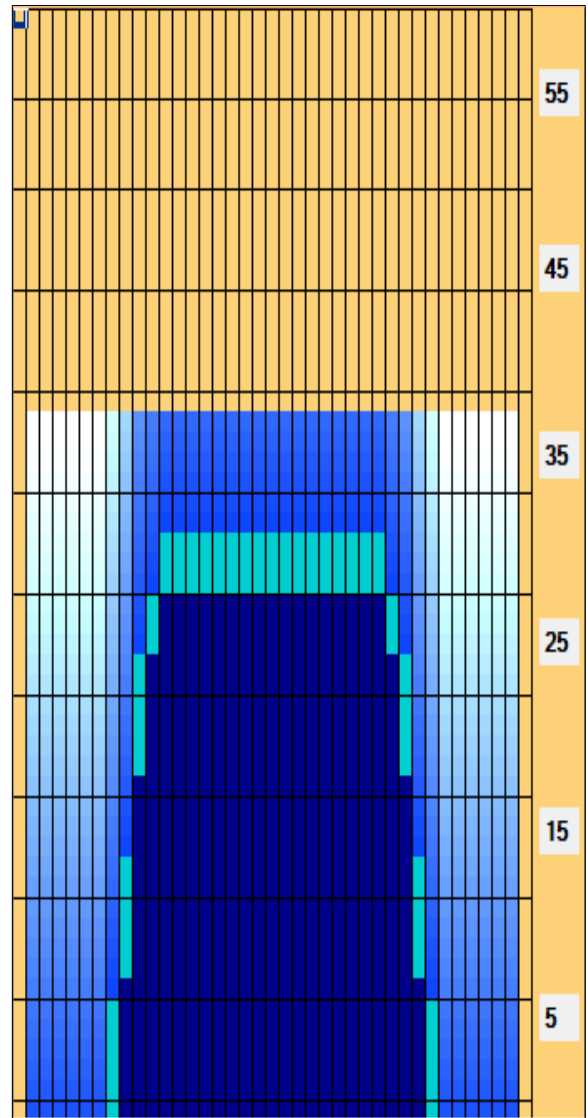
	Start	Stop	Loads	Speed	Crossed	Start	End	Feet	T.Oil
1	2L	2R	0	30	0	39.0	30.0	-9.0	0
2	12L	12R	1	22	17	30.0	26.9	-3.1	850
3	11L	11R	2	22	38	26.9	20.7	-6.2	1900
4	10L	10R	3	22	63	20.7	11.4	-9.3	3150
5	9L	9R	3	18	69	11.4	3.8	-7.6	3450
6	2L	2R	0	14	0	3.8	0.0	-3.8	0

Navigation: Forward Reverse More

Conditioner:
Type In or Select One

TransferType:
Type In or Select One

- Forward
- Reverse
- Combined
- Buff



Item Description	3L-7L:18L-18R Outside Track:Middle	8L-12L:18L-18R Middle Track:Middle	13L-17L:18L-18R Inside Track:Middle	18L-18R:17R-13R Middle: Inside Track	18L-18R:12R-8R Middle:Middle Track	18L-18R:7R-3R Middle:Outside Track
Track Zone Ratio	11	1.47	1	1	1.47	11

