

盛岡11月・12月



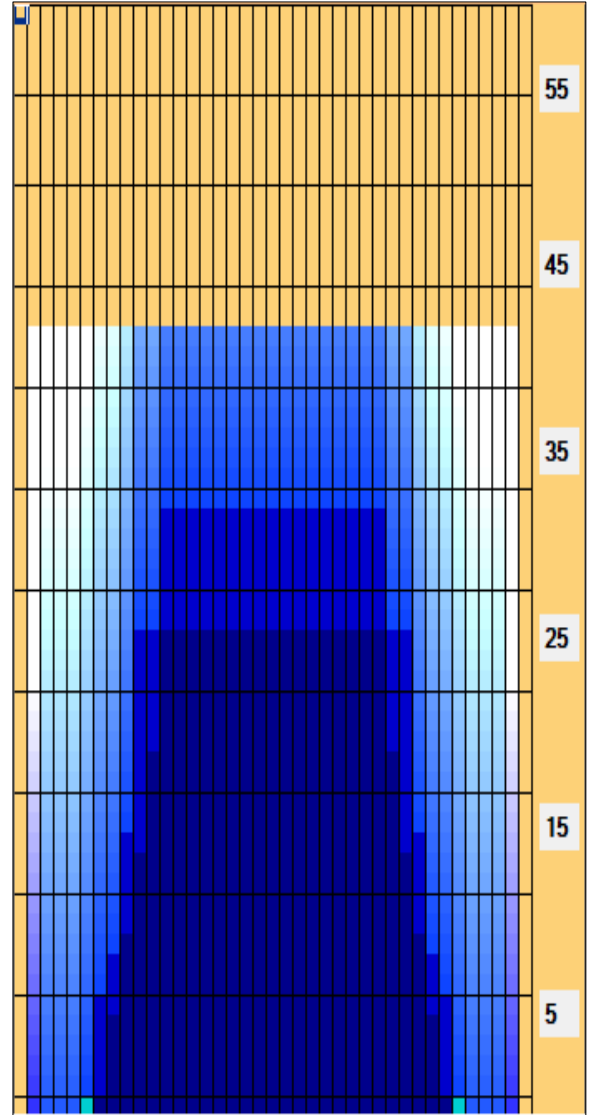
Oil Pattern Distance: 43 Feet **Reverse Brush Drop:** 41 Feet **Oil Per Board:** 50 uL
Forward Oil Total: 16.9 mL **Reverse Oil Total:** 9.75 mL **Volume Oil Total:** 26.65 mL
Forward Boards Crossed: 338 Boards **Reverse Boards Crossed:** 195 Boards **Total Boards Crossed:** 533 Boards

	Start	Stop	Loads	Speed	Crossed	Start	End	Feet	T.Oil
1	3L	3R	2	14	70	0.0	1.9	1.9	3500
2	6L	6R	2	14	58	1.9	5.8	3.9	2900
3	8L	8R	2	14	50	5.8	9.7	3.9	2500
4	9L	9R	2	14	46	9.7	13.6	3.9	2300
5	10L	10R	2	14	42	13.6	17.5	3.9	2100
6	11L	11R	2	18	38	17.5	22.6	5.1	1900
7	12L	12R	2	22	34	22.6	28.8	6.2	1700
8	14L	14R	0	30	0	28.8	43.0	14.2	0

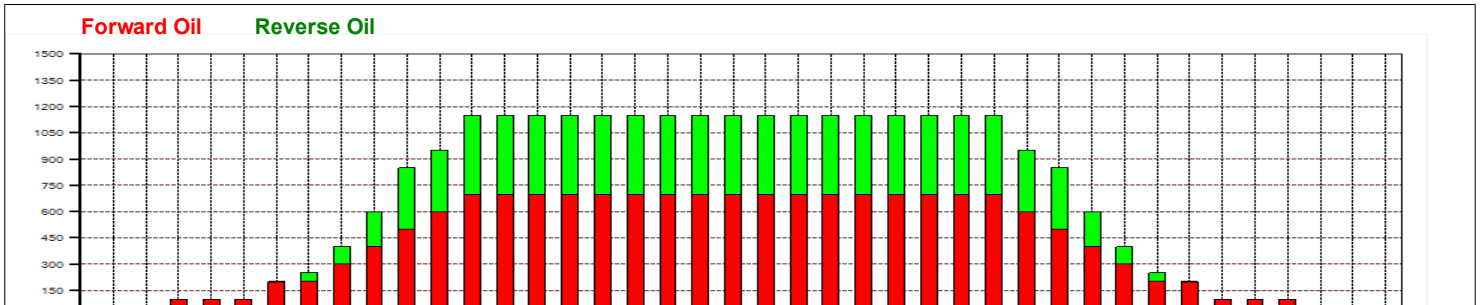
Conditioner: Type In or Select One
 TransferType: Type In or Select One

Forward
 Reverse
 Combined
 Buff

	Start	Stop	Loads	Speed	Crossed	Start	End	Feet	T.Oil
1	2L	2R	0	22	0	43.0	34.0	-9.0	0
2	12L	12R	2	22	34	34.0	27.8	-6.2	1700
3	10L	10R	3	22	63	27.8	18.5	-9.3	3150
4	9L	9R	2	22	46	18.5	12.3	-6.2	2300
5	8L	8R	1	18	25	12.3	9.8	-2.5	1250
6	7L	7R	1	18	27	9.8	7.3	-2.5	1350
7	2L	2R	0	14	0	7.3	0.0	-7.3	0



Item	3L-7L:18L-18R	8L-12L:18L-18R	13L-17L:18L-18R	18L-18R:17R-13R	18L-18R:12R-8R	18L-18R:7R-3R
Description	Outside Track:Middle	Middle Track:Middle	Inside Track:Middle	Middle: Inside Track	Middle:Middle Track	Middle:Outside Track
Track Zone Ratio	7.67	1.46	1	1	1.46	7.67



盛岡11月・12月



Oil Pattern Distance:	43 Feet	Reverse Brush Drop:	41 Feet	Oil Per Board:	50 uL
Forward Oil Total:	16.9 mL	Reverse Oil Total:	9.75 mL	Volume Oil Total:	26.65 mL
Forward Boards Crossed:	338 Boards	Reverse Boards Crossed:	195 Boards	Total Boards Crossed:	533 Boards
