

盛岡7月・8月



Oil Pattern Distance: 40 Feet **Reverse Brush Drop:** 34 Feet **Oil Per Board:** 50 uL
Forward Oil Total: 15.3 mL **Reverse Oil Total:** 11.5 mL **Volume Oil Total:** 26.8 mL
Forward Boards Crossed: 306 Boards **Reverse Boards Crossed:** 230 Boards **Total Boards Crossed:** 536 Boards

	Start	Stop	Loads	Speed	Crossed	Start	End	Feet	T.Oil
1	3L	3R	1	18	35	0.0	0.0	0.0	1750
2	5L	5R	1	18	31	0.0	2.5	2.5	1550
3	7L	7R	2	22	54	2.5	8.7	6.2	2700
4	8L	8R	3	22	75	8.7	18.0	9.3	3750
5	9L	9R	3	22	69	18.0	27.3	9.3	3450
6	10L	10R	2	22	42	27.3	33.5	6.2	2100
7	2L	2R	0	30	0	33.5	40.0	6.5	0

	Start	Stop	Loads	Speed	Crossed	Start	End	Feet	T.Oil
1	2L	2R	0	30	0	40.0	33.0	-7.0	0
2	12L	12R	2	26	34	33.0	25.7	-7.3	1700
3	10L	10R	3	22	63	25.7	16.4	-9.3	3150
4	8L	8R	3	14	75	16.4	10.5	-5.9	3750
5	6L	6R	2	14	58	10.5	6.6	-3.9	2900
6	2L	2R	0	14	0	6.6	0.0	-6.6	0

Conditioner:
Type In or Select One

TransferType:
Type In or Select One

Forward



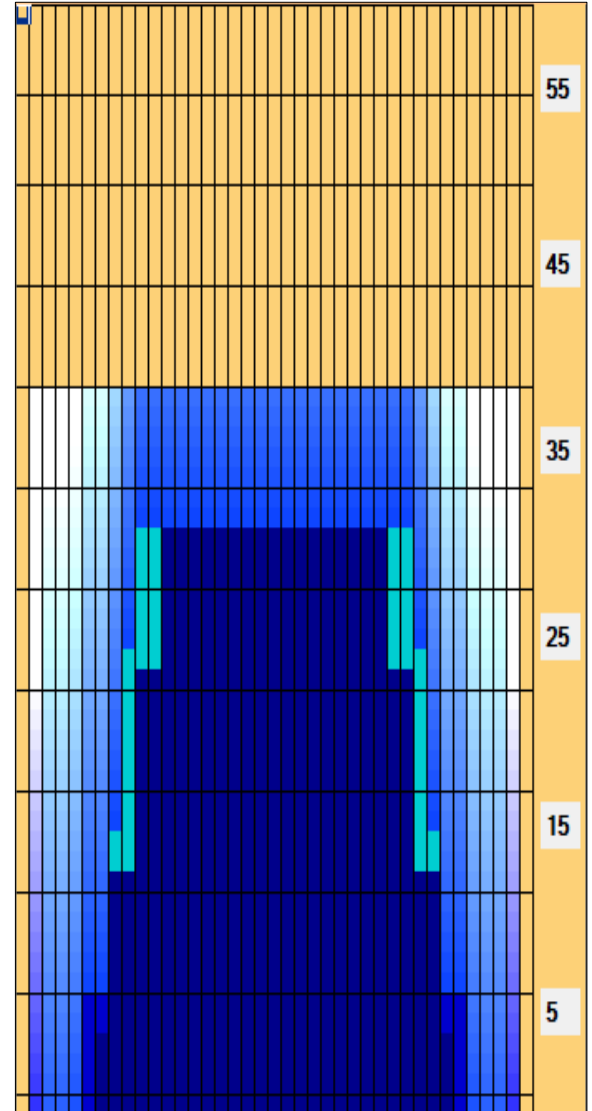
Reverse



Combined



Buff



Item Description	3L-7L:18L-18R Outside Track:Middle	8L-12L:18L-18R Middle Track:Middle	13L-17L:18L-18R Inside Track:Middle	18L-18R:17R-13R Middle: Inside Track	18L-18R:12R-8R Middle:Middle Track	18L-18R:7R-3R Middle:Outside Track
Track Zone Ratio	7.86	1.24	1	1	1.24	7.86

