

# 盛岡11月・12月



<b>Oil Pattern Distance:</b>	<b>43 Feet</b>	<b>Reverse Brush Drop:</b>	<b>38 Feet</b>	<b>Oil Per Board:</b>	<b>50 uL</b>
<b>Forward Oil Total:</b>	<b>18.15 mL</b>	<b>Reverse Oil Total:</b>	<b>9.95 mL</b>	<b>Volume Oil Total:</b>	<b>28.1 mL</b>
<b>Forward Boards Crossed:</b>	<b>363 Boards</b>	<b>Reverse Boards Crossed:</b>	<b>199 Boards</b>	<b>Total Boards Crossed:</b>	<b>562 Boards</b>

	Start	Stop	Loads	Speed	Crossed	Start	End	Feet	T.Oil
1	3L	3R	2	14	70	0.0	1.9	1.9	3500
2	6L	6R	2	14	58	1.9	5.8	3.9	2900
3	8L	8R	3	14	75	5.8	11.7	5.9	3750
4	9L	9R	2	14	46	11.7	15.6	3.9	2300
5	10L	10R	2	14	42	15.6	19.5	3.9	2100
6	11L	11R	2	18	38	19.5	24.6	5.1	1900
7	12L	12R	2	18	34	24.6	29.7	5.1	1700
8	2L	2R	0	30	0	29.7	43.0	13.3	0

Navigation: Forward Reverse More

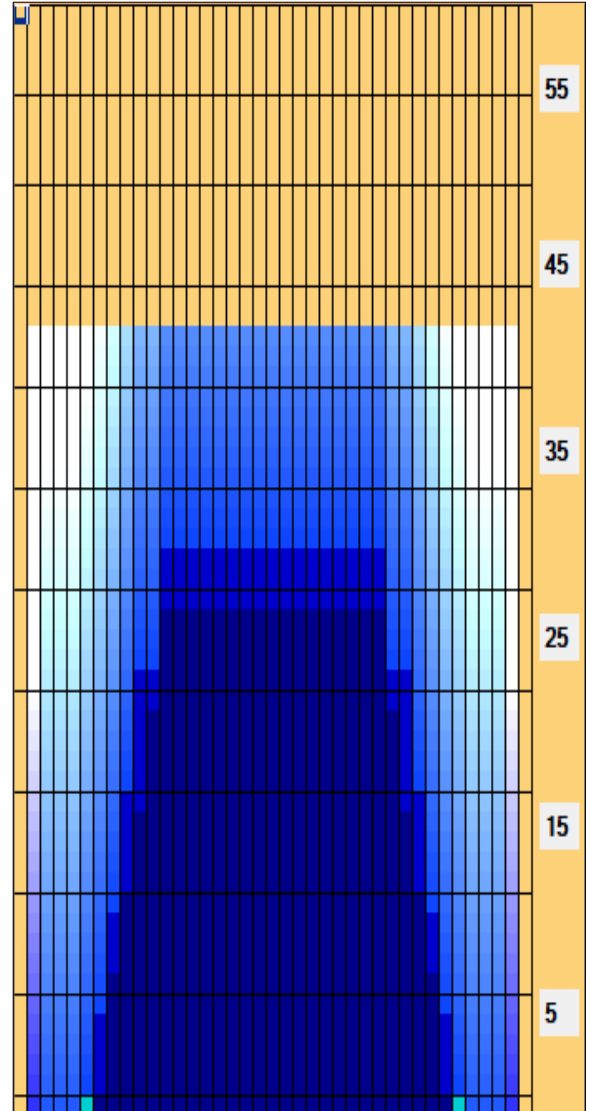
	Start	Stop	Loads	Speed	Crossed	Start	End	Feet	T.Oil
1	2L	2R	0	26	0	43.0	32.0	-11.0	0
2	12L	12R	2	22	34	32.0	25.8	-6.2	1700
3	10L	10R	2	22	42	25.8	19.6	-6.2	2100
4	9L	9R	2	18	46	19.6	14.5	-5.1	2300
5	8L	8R	2	18	50	14.5	9.4	-5.1	2500
6	7L	7R	1	18	27	9.4	6.9	-2.5	1350
7	2L	2R	0	14	0	6.9	0.0	-6.9	0

Navigation: Forward Reverse More

Conditioner:  
Type In or Select One

TransferType:  
Type In or Select One

- Forward
- Reverse
- Combined
- Buff



Item Description	3L-7L:18L-18R Outside Track:Middle	8L-12L:18L-18R Middle Track:Middle	13L-17L:18L-18R Inside Track:Middle	18L-18R:17R-13R Middle: Inside Track	18L-18R:12R-8R Middle:Middle Track	18L-18R:7R-3R Middle:Outside Track
Track Zone Ratio	8	14	1	1	14	8

