

2019年1・2月度レーンコンディション



Oil Pattern Distance:	39 Feet	Reverse Brush Drop:	39 Feet	Oil Per Board:	50 uL
Forward Oil Total:	11.25 mL	Reverse Oil Total:	10.55 mL	Volume Oil Total:	21.8 mL
Forward Boards Crossed:	225 Boards	Reverse Boards Crossed:	211 Boards	Total Boards Crossed:	436 Boards

	Start	Stop	Loads	Speed	Crossed	Start	End	Feet	T.Oil
1	4L	4R	1	18	33	0.0	0.0	0.0	1650
2	6L	6R	1	18	29	0.0	2.5	2.5	1450
3	7L	7R	1	18	27	2.5	5.0	2.5	1350
4	10L	10R	2	22	42	5.0	11.2	6.2	2100
5	11L	11R	2	22	38	11.2	17.4	6.2	1900
6	12L	12R	2	22	34	17.4	23.6	6.2	1700
7	15L	15R	2	26	22	23.6	30.9	7.3	1100
8	2L	2R	0	26	0	30.9	39.0	8.1	0

Navigation: Forward Reverse More

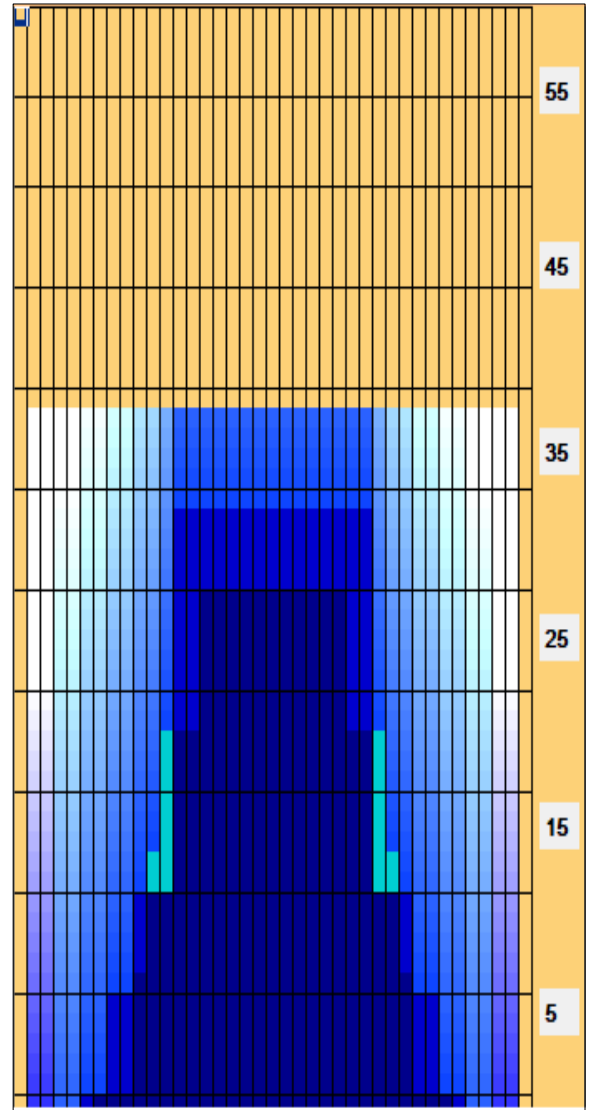
	Start	Stop	Loads	Speed	Crossed	Start	End	Feet	T.Oil
1	2L	2R	0	26	0	39.0	34.0	-5.0	0
2	13L	13R	3	22	45	34.0	24.7	-9.3	2250
3	13L	13R	3	22	45	24.7	15.4	-9.3	2250
4	10L	10R	2	18	42	15.4	10.3	-5.1	2100
5	8L	8R	2	18	50	10.3	5.2	-5.1	2500
6	6L	6R	1	14	29	5.2	3.3	-1.9	1450
7	2L	2R	0	14	0	3.3	0.0	-3.3	0

Navigation: Forward Reverse More

Conditioner:
Type In or Select
One

TransferType:
Type In or Select
One

- Forward
- Reverse
- Combined
- Buff



Item	3L-7L:18L-18R	8L-12L:18L-18R	13L-17L:18L-18R	18L-18R:17R-13R	18L-18R:12R-8R	18L-18R:7R-3R
Description	Outside Track:Middle	Middle Track:Middle	Inside Track:Middle	Middle:Inside Track	Middle:Middle Track	Middle:Outside Track
Track Zone Ratio	12.22	2.29	1.04	1.04	2.29	12.22

