

2019年5月6月レーンコンディション



Oil Pattern Distance:	42 Feet	Reverse Brush Drop:	42 Feet	Oil Per Board:	45 uL
Forward Oil Total:	5.76 mL	Reverse Oil Total:	14.355 mL	Volume Oil Total:	20.115 mL
Forward Boards Crossed:	128 Boards	Reverse Boards Crossed:	319 Boards	Total Boards Crossed:	447 Boards

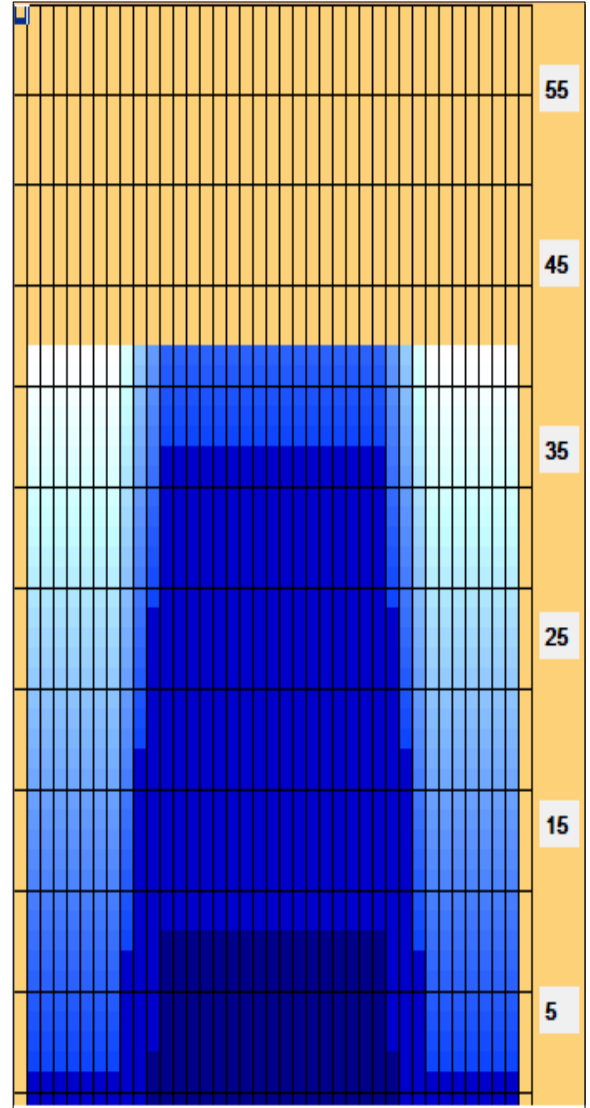
	Start	Stop	Loads	Speed	Crossed	Start	End	Feet	T.Oil
1	2L	2R	1	10	37	0.0	0.0	0.0	1665
2	11L	11R	3	18	57	0.0	7.6	7.6	2565
3	12L	12R	2	22	34	7.6	13.8	6.2	1530
4	2L	2R	0	26	0	13.8	42.0	28.2	0

Conditioner:
Type In or Select One

TransferType:
Type In or Select One

Forward
Reverse
Combined
Buff

	Start	Stop	Loads	Speed	Crossed	Start	End	Feet	T.Oil
1	2L	2R	0	30	0	42.0	37.0	-5.0	0
2	12L	12R	3	18	51	37.0	29.4	-7.6	2295
3	11L	11R	3	18	57	29.4	21.8	-7.6	2565
4	10L	10R	5	14	105	21.8	11.9	-9.9	4725
5	9L	9R	3	14	69	11.9	6.0	-5.9	3105
6	2L	2R	1	14	37	6.0	4.1	-1.9	1665
7	2L	2R	0	14	0	4.1	0.0	-4.1	0



Item	3L-7L:18L-18R	8L-12L:18L-18R	13L-17L:18L-18R	18L-18R:17R-13R	18L-18R:12R-8R	18L-18R:7R-3R
Description	Outside Track:Middle	Middle Track:Middle	Inside Track:Middle	Middle:Inside Track	Middle:Middle Track	Middle:Outside Track
Track Zone Ratio	10.5	1.94	1	1	1.94	10.5

