

2019年9月10月レーンコンディション



Oil Pattern Distance: 43 Feet **Reverse Brush Drop:** 35 Feet **Oil Per Board:** 50 uL
Forward Oil Total: 14.5 mL **Reverse Oil Total:** 7.35 mL **Volume Oil Total:** 21.85 mL
Forward Boards Crossed: 290 Boards **Reverse Boards Crossed:** 147 Boards **Total Boards Crossed:** 437 Boards

	Start	Stop	Loads	Speed	Crossed	Start	End	Feet	T.Oil
1	2L	2R	1	14	37	0.0	0.0	0.0	1850
2	7L	7R	1	14	27	0.0	1.9	1.9	1350
3	9L	9R	2	18	46	1.9	7.0	5.1	2300
4	10L	10R	3	18	63	7.0	14.6	7.6	3150
5	11L	11R	3	18	57	14.6	22.2	7.6	2850
6	13L	13R	4	22	60	22.2	34.6	12.4	3000
7	2L	2R	0	30	0	34.6	43.0	8.4	0

◀ ▶ ▶▶ Forward Reverse More

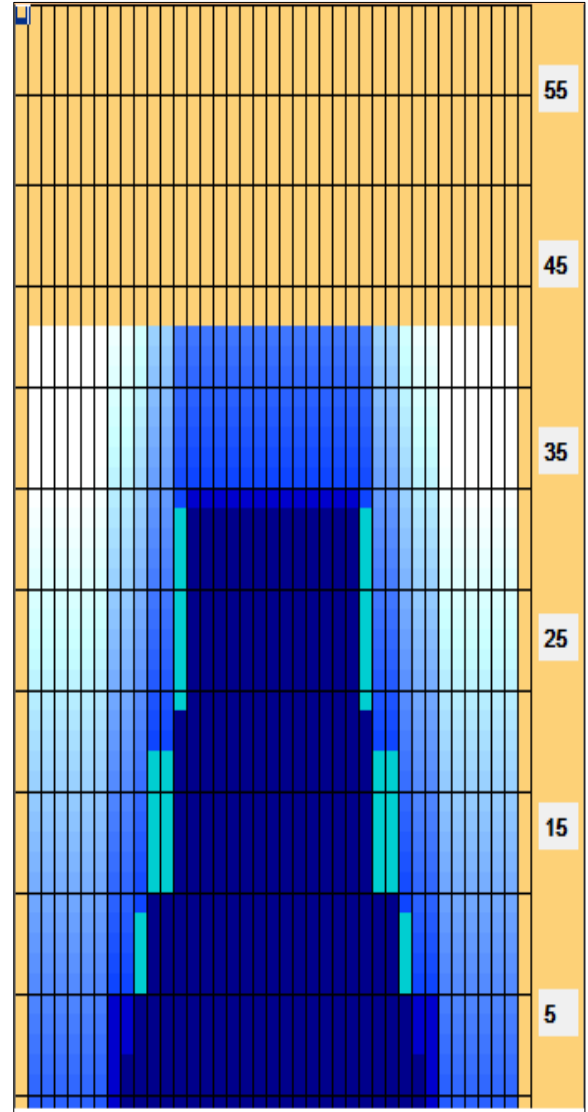
	Start	Stop	Loads	Speed	Crossed	Start	End	Feet	T.Oil
1	2L	2R	0	30	0	43.0	35.0	-8.0	0
2	14L	14R	3	26	39	35.0	24.0	-11.0	1950
3	13L	13R	3	22	45	24.0	14.7	-9.3	2250
4	11L	11R	2	18	38	14.7	9.6	-5.1	1900
5	8L	8R	1	18	25	9.6	7.1	-2.5	1250
6	2L	2R	0	14	0	7.1	0.0	-7.1	0

◀ ▶ ▶▶ Forward Reverse More

Conditioner:
 Type In or Select
 One

TransferType:
 Type In or Select
 One

- Forward
- Reverse
- Combined
- Buff



Item	3L-7L:18L-18R	8L-12L:18L-18R	13L-17L:18L-18R	18L-18R:17R-13R	18L-18R:12R-8R	18L-18R:7R-3R
Description	Outside Track:Middle	Middle Track:Middle	Inside Track:Middle	Middle:Inside Track	Middle:Middle Track	Middle:Outside Track
Track Zone Ratio	19.17	2.74	1.03	1.03	2.74	19.17

