

# 2020年3月4月レーンコンディション



<b>Oil Pattern Distance:</b>	<b>38 Feet</b>	<b>Reverse Brush Drop:</b>	<b>38 Feet</b>	<b>Oil Per Board:</b>	<b>45 uL</b>
<b>Forward Oil Total:</b>	<b>14.31 mL</b>	<b>Reverse Oil Total:</b>	<b>7.38 mL</b>	<b>Volume Oil Total:</b>	<b>21.69 mL</b>
<b>Forward Boards Crossed:</b>	<b>318 Boards</b>	<b>Reverse Boards Crossed:</b>	<b>164 Boards</b>	<b>Total Boards Crossed:</b>	<b>482 Boards</b>

	Start	Stop	Loads	Speed	Crossed	Start	End	Feet	T.Oil
1	2L	2R	1	10	37	0.0	0.0	0.0	1665
2	4L	4R	1	10	33	0.0	1.4	1.4	1485
3	5L	5R	1	10	31	1.4	2.8	1.4	1395
4	6L	6R	1	10	29	2.8	4.2	1.4	1305
5	7L	7R	1	14	27	4.2	6.1	1.9	1215
6	8L	8R	1	14	25	6.1	8.0	1.9	1125
7	9L	9R	1	14	23	8.0	9.9	1.9	1035
8	10L	10R	1	14	21	9.9	11.8	1.9	945
9	11L	11R	1	18	19	11.8	14.3	2.5	855
10	12L	12R	1	22	17	14.3	17.4	3.1	765
11	13L	13R	2	22	30	17.4	23.6	6.2	1350
12	14L	14R	2	26	26	23.6	30.9	7.3	1170
13	2L	2R	0	30	0	30.9	38.0	7.1	0

Navigation: Forward Reverse More

	Start	Stop	Loads	Speed	Crossed	Start	End	Feet	T.Oil
1	2L	2R	0	30	0	38.0	34.0	-4.0	0
2	14L	14R	1	26	13	34.0	30.4	-3.6	585
3	12L	12R	1	26	17	30.4	26.8	-3.6	765
4	10L	10R	3	22	63	26.8	17.5	-9.3	2835
5	9L	9R	2	22	46	17.5	11.3	-6.2	2070
6	8L	8R	1	18	25	11.3	8.8	-2.5	1125
7	2L	2R	0	14	0	8.8	0.0	-8.8	0

Navigation: Forward Reverse More

Conditioner:  
Type In or Select  
One

TransferType:  
Type In or Select  
One

Forward



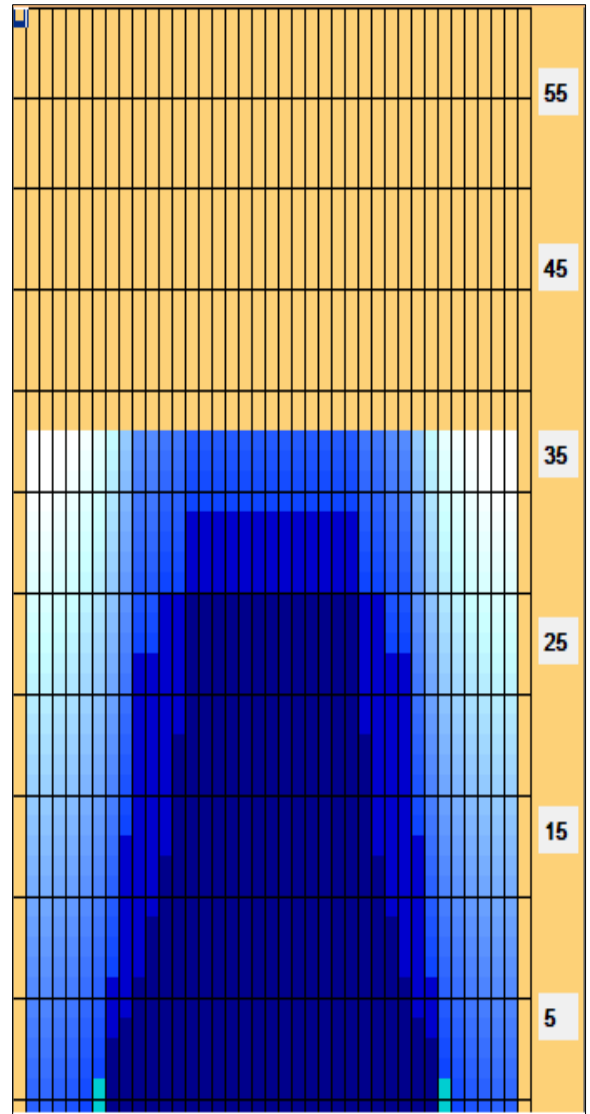
Reverse



Combined



Buff



Item	3L-7L:18L-18R	8L-12L:18L-18R	13L-17L:18L-18R	18L-18R:17R-13R	18L-18R:12R-8R	18L-18R:7R-3R
Description	Outside Track:Middle	Middle Track:Middle	Inside Track:Middle	Middle:Inside Track	Middle:Middle Track	Middle:Outside Track
Track Zone Ratio	7.33	1.75	1.03	1.03	1.75	7.33

