

# 2021年3月4月レーンコンディション



Oil Pattern Distance:	44 Feet	Reverse Brush Drop:	44 Feet	Oil Per Board:	45 uL
Forward Oil Total:	12.465 mL	Reverse Oil Total:	8.235 mL	Volume Oil Total:	20.7 mL
Forward Boards Crossed:	277 Boards	Reverse Boards Crossed:	183 Boards	Total Boards Crossed:	460 Boards

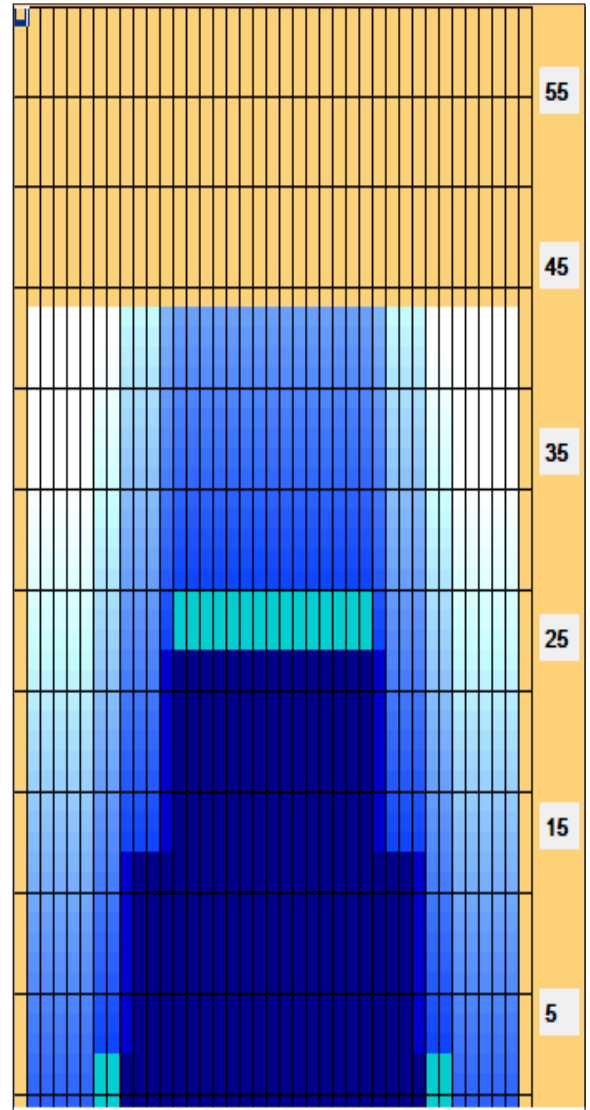
	Start	Stop	Loads	Speed	Crossed	Start	End	Feet	T.Oil
1	2L	2R	1	18	37	0.0	0.0	0.0	1665
2	7L	7R	3	18	81	0.0	7.6	7.6	3645
3	10L	10R	4	18	84	7.6	17.8	10.2	3780
4	13L	13R	5	18	75	17.8	30.5	12.7	3375
5	2L	2R	0	30	0	30.5	44.0	13.5	0

Conditioner:  
Type In or Select One

TransferType:  
Type In or Select One

Forward  
Reverse  
Combined  
Buff

	Start	Stop	Loads	Speed	Crossed	Start	End	Feet	T.Oil
1	2L	2R	0	30	0	44.0	27.0	-17.0	0
2	12L	12R	4	18	68	27.0	16.8	-10.2	3060
3	9L	9R	5	18	115	16.8	4.1	-12.7	5175
4	2L	2R	0	14	0	4.1	0.0	-4.1	0



Item	3L-7L:18L-18R	8L-12L:18L-18R	13L-17L:18L-18R	18L-18R:17R-13R	18L-18R:12R-8R	18L-18R:7R-3R
Description	Outside Track:Middle	Middle Track:Middle	Inside Track:Middle	Middle:Inside Track	Middle:Middle Track	Middle:Outside Track
Track Zone Ratio	13.75	1.96	1	1	1.96	13.75

