

2022年3月4月レーンコンディション



Oil Pattern Distance: 42 Feet **Reverse Brush Drop:** 42 Feet **Oil Per Board:** 45 uL
Forward Oil Total: 14.85 mL **Reverse Oil Total:** 6.57 mL **Volume Oil Total:** 21.42 mL
Forward Boards Crossed: 330 Boards **Reverse Boards Crossed:** 146 Boards **Total Boards Crossed:** 476 Boards

	Start	Stop	Loads	Speed	Crossed	Start	End	Feet	T.Oil
1	2L	2R	1	14	37	0.0	0.0	0.0	1665
2	8L	8R	2	14	50	0.0	3.9	3.9	2250
3	9L	9R	6	14	138	3.9	15.8	11.9	6210
4	10L	10R	5	14	105	15.8	25.7	9.9	4725
5	2L	2R	0	30	0	25.7	42.0	16.3	0

Forward Reverse More

	Start	Stop	Loads	Speed	Crossed	Start	End	Feet	T.Oil
1	2L	2R	0	30	0	42.0	27.0	-15.0	0
2	11L	11R	3	26	57	27.0	16.0	-11.0	2565
3	8L	8R	1	26	25	16.0	12.4	-3.6	1125
4	7L	7R	1	22	27	12.4	9.3	-3.1	1215
5	2L	2R	1	14	37	9.3	7.4	-1.9	1665
6	2L	2R	0	14	0	7.4	0.0	-7.4	0

Forward Reverse More

Conditioner:
Type In or Select One

TransferType:
Type In or Select One

Forward



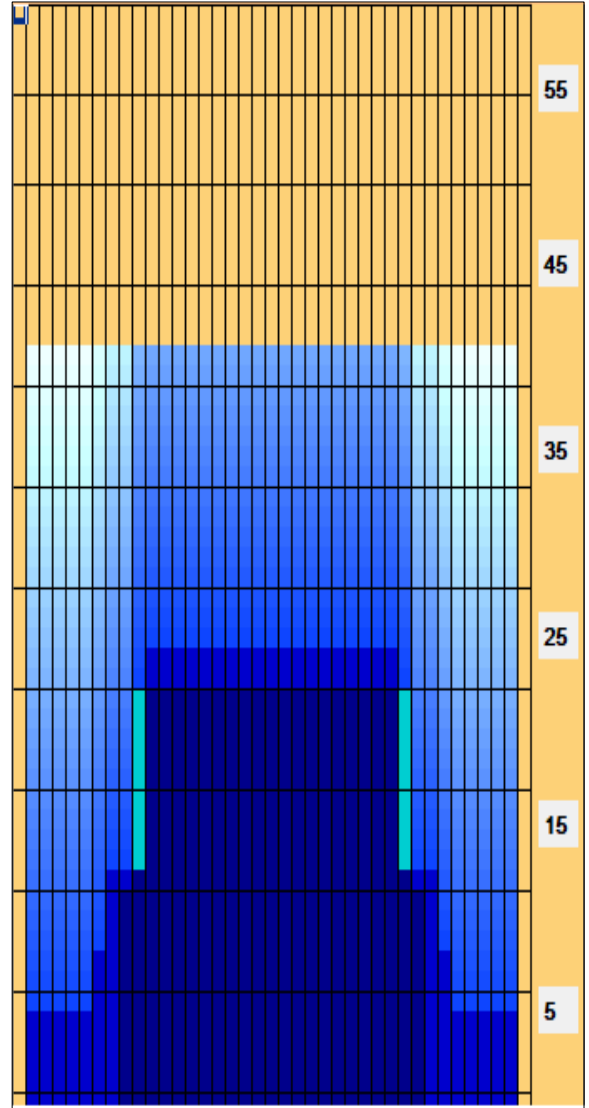
Reverse



Combined



Buff



Item	3L-7L:18L-18R	8L-12L:18L-18R	13L-17L:18L-18R	18L-18R:17R-13R	18L-18R:12R-8R	18L-18R:7R-3R
Description	Outside Track:Middle	Middle Track:Middle	Inside Track:Middle	Middle:Inside Track	Middle:Middle Track	Middle:Outside Track
Track Zone Ratio	9.09	1.33	1	1	1.33	9.09

