

2022年5月6月レーンコンディション



Oil Pattern Distance: 43 Feet **Reverse Brush Drop:** 43 Feet **Oil Per Board:** 45 uL
Forward Oil Total: 13.86 mL **Reverse Oil Total:** 7.155 mL **Volume Oil Total:** 21.015 mL
Forward Boards Crossed: 308 Boards **Reverse Boards Crossed:** 159 Boards **Total Boards Crossed:** 467 Boards

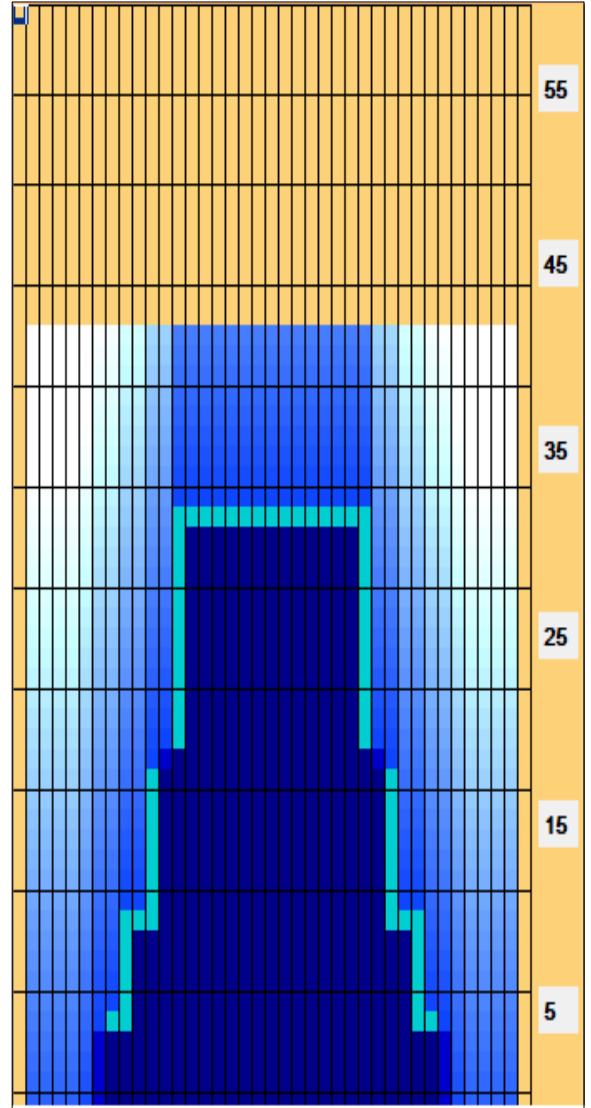
	Start	Stop	Loads	Speed	Crossed	Start	End	Feet	T.Oil
1	2L	2R	1	14	37	0.0	0.0	0.0	1665
2	6L	6R	2	14	58	0.0	3.9	3.9	2610
3	8L	8R	2	18	50	3.9	9.0	5.1	2250
4	9L	9R	2	18	46	9.0	14.1	5.1	2070
5	11L	11R	3	18	57	14.1	21.7	7.6	2565
6	13L	13R	4	22	60	21.7	34.1	12.4	2700
7	2L	2R	0	30	0	34.1	43.0	8.9	0

	Start	Stop	Loads	Speed	Crossed	Start	End	Feet	T.Oil
1	2L	2R	0	26	0	43.0	33.0	-10.0	0
2	14L	14R	3	26	39	33.0	22.0	-11.0	1755
3	12L	12R	3	22	51	22.0	12.7	-9.3	2295
4	10L	10R	2	18	42	12.7	7.6	-5.1	1890
5	7L	7R	1	14	27	7.6	5.7	-1.9	1215
6	2L	2R	0	14	0	5.7	0.0	-5.7	0

Conditioner:
Type In or Select
One

TransferType:
Type In or Select
One

- Forward
- Reverse
- Combined
- Buff



Item	3L-7L:18L-18R	8L-12L:18L-18R	13L-17L:18L-18R	18L-18R:17R-13R	18L-18R:12R-8R	18L-18R:7R-3R
Description	Outside Track:Middle	Middle Track:Middle	Inside Track:Middle	Middle:Inside Track	Middle:Middle Track	Middle:Outside Track
Track Zone Ratio	11.5	2.17	1.03	1.03	2.17	11.5

