

7月8月レーンコンディション (4 2 f)



Oil Pattern Distance: 42 Feet **Reverse Brush Drop:** 42 Feet **Oil Per Board:** 45 uL
Forward Oil Total: 12.375 mL **Reverse Oil Total:** 9.585 mL **Volume Oil Total:** 21.96 mL
Forward Boards Crossed: 275 Boards **Reverse Boards Crossed:** 213 Boards **Total Boards Crossed:** 488 Boards

	Start	Stop	Loads	Speed	Crossed	Start	End	Feet	T.Oil
1	2L	2R	1	10	37	0.0	0.0	0.0	1665
2	8L	8R	3	14	75	0.0	5.9	5.9	3375
3	9L	9R	1	18	23	5.9	8.4	2.5	1035
4	10L	10R	4	18	84	8.4	18.6	10.2	3780
5	12L	12R	2	22	34	18.6	24.8	6.2	1530
6	14L	14R	1	22	13	24.8	27.9	3.1	585
7	16L	16R	1	22	9	27.9	31.0	3.1	405
8	2L	2R	0	22	0	31.0	38.0	7.0	0
9	2L	2R	0	26	0	38.0	42.0	4.0	0

	Start	Stop	Loads	Speed	Crossed	Start	End	Feet	T.Oil
1	2L	2R	0	22	0	42.0	30.0	-12.0	0
2	11L	11R	3	18	57	30.0	22.4	-7.6	2565
3	9L	9R	3	18	69	22.4	14.8	-7.6	3105
4	8L	8R	2	18	50	14.8	9.7	-5.1	2250
5	2L	2R	1	14	37	9.7	7.8	-1.9	1665
6	2L	2R	0	14	0	7.8	0.0	-7.8	0

Conditioner:
Type In or Select One

TransferType:
Type In or Select One

Forward



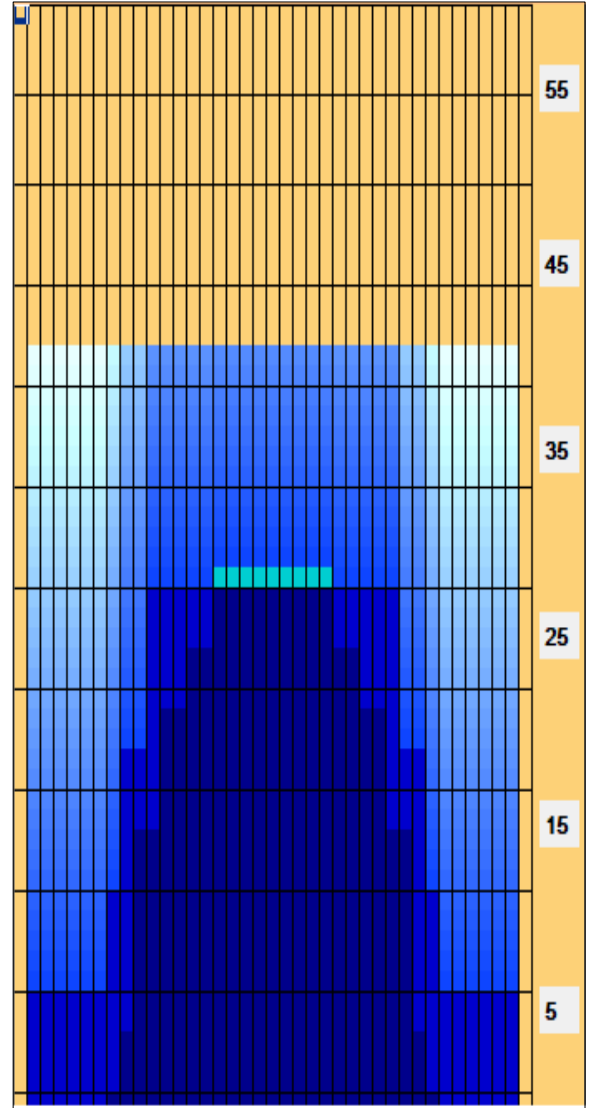
Reverse



Combined



Buff



Item	3L-7L:18L-18R	8L-12L:18L-18R	13L-17L:18L-18R	18L-18R:17R-13R	18L-18R:12R-8R	18L-18R:7R-3R
Description	Outside Track:Middle	Middle Track:Middle	Inside Track:Middle	Middle:Inside Track	Middle:Middle Track	Middle:Outside Track
Track Zone Ratio	11	1.55	1.04	1.04	1.55	11

