

2022年11月12月レーンコンディション



Oil Pattern Distance:	40 Feet	Reverse Brush Drop:	40 Feet	Oil Per Board:	50 uL
Forward Oil Total:	12.55 mL	Reverse Oil Total:	8.15 mL	Volume Oil Total:	20.7 mL
Forward Boards Crossed:	251 Boards	Reverse Boards Crossed:	163 Boards	Total Boards Crossed:	414 Boards

	Start	Stop	Loads	Speed	Crossed	Start	End	Feet	T.Oil
1	2L	2R	1	14	37	0.0	0.0	0.0	1850
2	5L	5R	1	14	31	0.0	1.9	1.9	1550
3	7L	7R	2	18	54	1.9	7.0	5.1	2700
4	9L	9R	2	18	46	7.0	12.1	5.1	2300
5	11L	11R	2	18	38	12.1	17.2	5.1	1900
6	13L	13R	3	22	45	17.2	26.5	9.3	2250
7	2L	2R	0	30	0	26.5	40.0	13.5	0

Navigation: Forward Reverse More

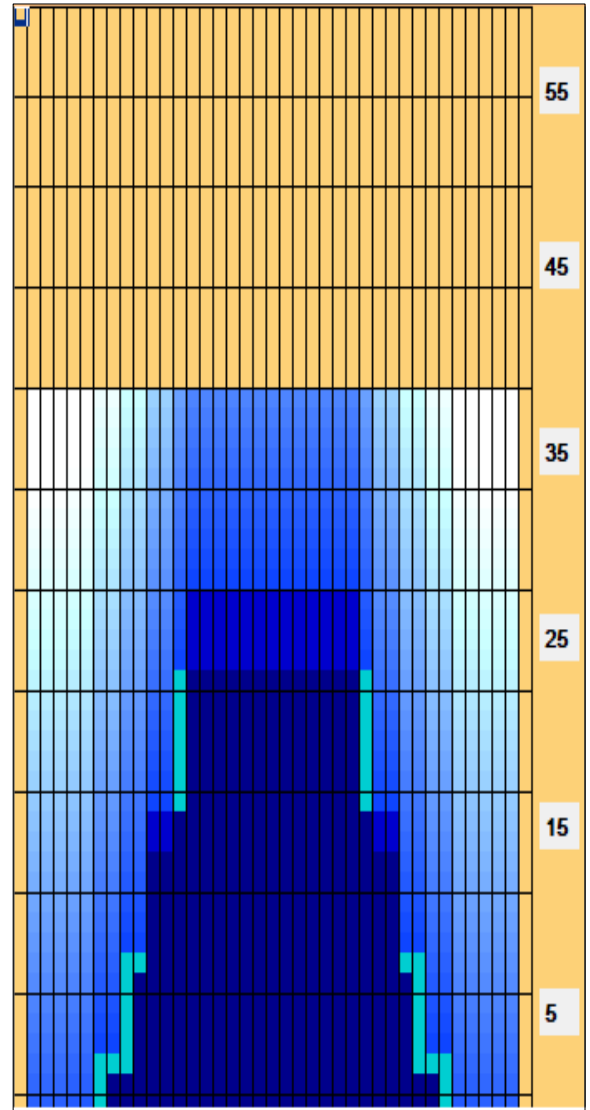
	Start	Stop	Loads	Speed	Crossed	Start	End	Feet	T.Oil
1	2L	2R	0	26	0	40.0	30.0	-10.0	0
2	14L	14R	3	26	39	30.0	19.0	-11.0	1950
3	11L	11R	3	18	57	19.0	11.4	-7.6	2850
4	10L	10R	2	18	42	11.4	6.3	-5.1	2100
5	8L	8R	1	14	25	6.3	4.4	-1.9	1250
6	2L	2R	0	14	0	4.4	0.0	-4.4	0

Navigation: Forward Reverse More

Conditioner:
Type In or Select
One

TransferType:
Type In or Select
One

- Forward
- Reverse
- Combined
- Buff



Item	3L-7L:18L-18R	8L-12L:18L-18R	13L-17L:18L-18R	18L-18R:17R-13R	18L-18R:12R-8R	18L-18R:7R-3R
Description	Outside Track:Middle	Middle Track:Middle	Inside Track:Middle	Middle:Inside Track	Middle:Middle Track	Middle:Outside Track
Track Zone Ratio	10	2.04	1.03	1.03	2.04	10

