

2023年1月2月レーンコンディション



Oil Pattern Distance:	42 Feet	Reverse Brush Drop:	42 Feet	Oil Per Board:	45 uL
Forward Oil Total:	13.05 mL	Reverse Oil Total:	8.55 mL	Volume Oil Total:	21.6 mL
Forward Boards Crossed:	290 Boards	Reverse Boards Crossed:	190 Boards	Total Boards Crossed:	480 Boards

	Start	Stop	Loads	Speed	Crossed	Start	End	Feet	T.Oil
1	3L	3R	1	14	35	0.0	0.0	0.0	1575
2	7L	7R	1	14	27	0.0	1.9	1.9	1215
3	8L	8R	3	18	75	1.9	9.5	7.6	3375
4	9L	9R	3	22	69	9.5	18.8	9.3	3105
5	10L	10R	4	26	84	18.8	33.5	14.7	3780
6	2L	2R	0	30	0	33.5	42.0	8.5	0

Navigation: Forward Reverse More

	Start	Stop	Loads	Speed	Crossed	Start	End	Feet	T.Oil
1	2L	2R	0	30	0	42.0	30.0	-12.0	0
2	11L	11R	3	26	57	30.0	19.0	-11.0	2565
3	9L	9R	2	22	46	19.0	12.8	-6.2	2070
4	8L	8R	2	18	50	12.8	7.7	-5.1	2250
5	2L	2R	1	14	37	7.7	5.8	-1.9	1665
6	2L	2R	0	14	0	5.8	0.0	-5.8	0

Navigation: Forward Reverse More

Conditioner:
Type In or Select One

TransferType:
Type In or Select One

Forward



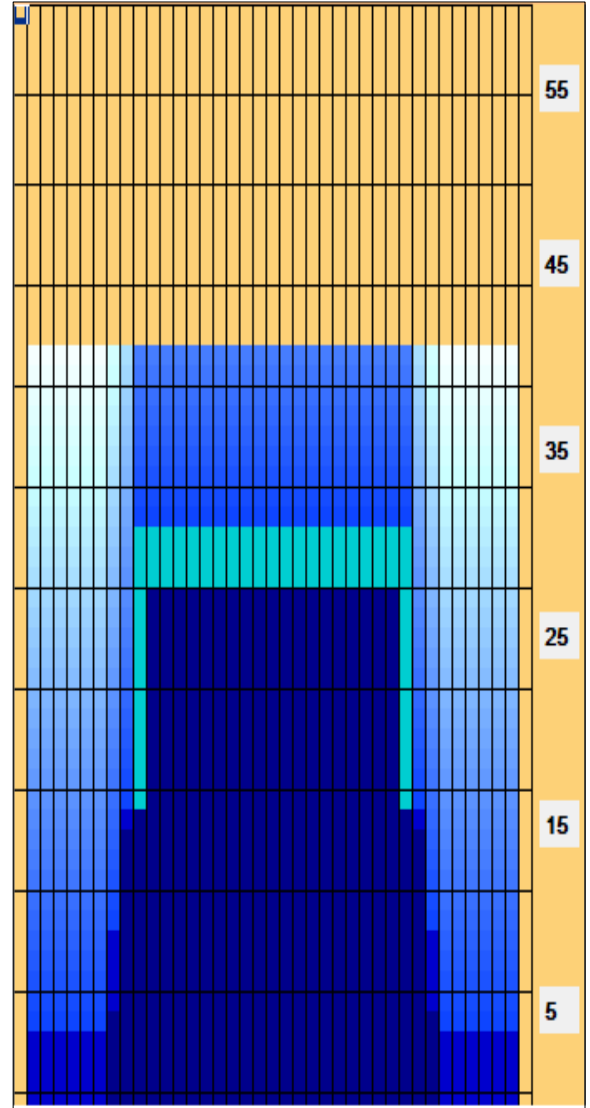
Reverse



Combined



Buff



Item	3L-7L:18L-18R	8L-12L:18L-18R	13L-17L:18L-18R	18L-18R:17R-13R	18L-18R:12R-8R	18L-18R:7R-3R
Description	Outside Track:Middle	Middle Track:Middle	Inside Track:Middle	Middle:Inside Track	Middle:Middle Track	Middle:Outside Track
Track Zone Ratio	9.09	1.28	1	1	1.28	9.09

