

2024年7月8月レーンコンディション



Oil Pattern Distance:	41 Feet	Reverse Brush Drop:	41 Feet	Oil Per Board:	45 uL
Forward Oil Total:	14.355 mL	Reverse Oil Total:	8.01 mL	Volume Oil Total:	22.365 mL
Forward Boards Crossed:	319 Boards	Reverse Boards Crossed:	178 Boards	Total Boards Crossed:	497 Boards

	Start	Stop	Loads	Speed	Crossed	Start	End	Feet	T.Oil
1	4L	4R	1	14	33	0.0	0.0	0.0	1485
2	6L	6R	2	18	58	0.0	5.1	5.1	2610
3	8L	8R	3	22	75	5.1	14.4	9.3	3375
4	9L	9R	3	22	69	14.4	23.7	9.3	3105
5	10L	10R	4	26	84	23.7	38.4	14.7	3780
6	2L	2R	0	30	0	38.4	41.0	2.6	0

Conditioner:
Type In or Select One

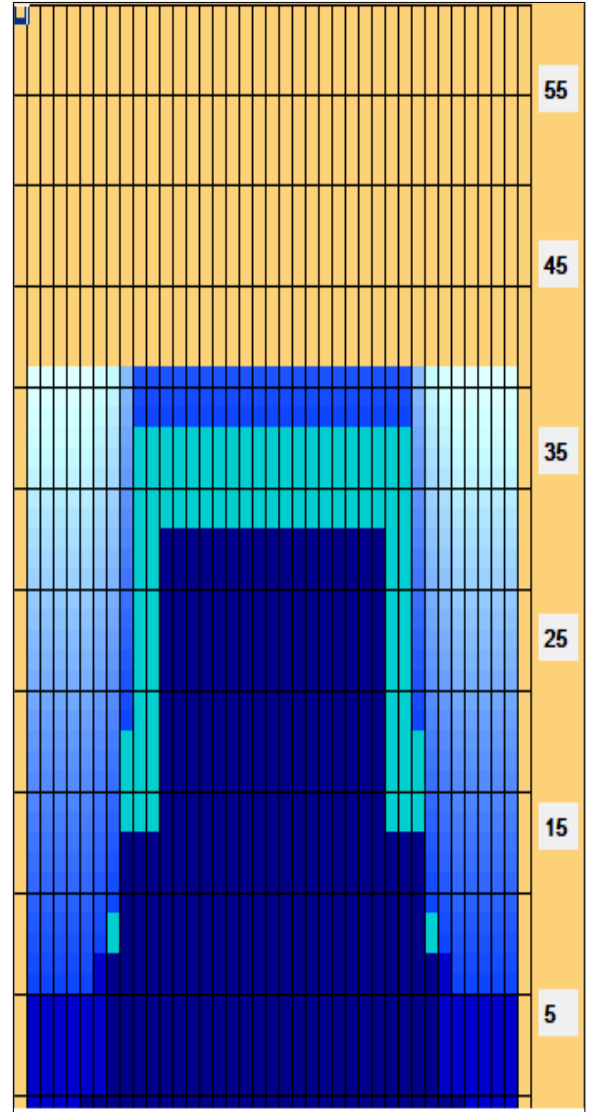
TransferType:
Type In or Select One

◀ ▶ ⏪ ⏩ Forward Reverse More

	Start	Stop	Loads	Speed	Crossed	Start	End	Feet	T.Oil
1	2L	2R	0	30	0	41.0	33.0	-8.0	0
2	12L	12R	4	26	68	33.0	18.3	-14.7	3060
3	9L	9R	2	22	46	18.3	12.1	-6.2	2070
4	7L	7R	1	18	27	12.1	9.6	-2.5	1215
5	2L	2R	1	14	37	9.6	7.7	-1.9	1665
6	2L	2R	0	14	0	7.7	0.0	-7.7	0

◀ ▶ ⏪ ⏩ Forward Reverse More

- Forward
- Reverse
- Combined
- Buff



Item	3L-7L:18L-18R	8L-12L:18L-18R	13L-17L:18L-18R	18L-18R:17R-13R	18L-18R:12R-8R	18L-18R:7R-3R
Description	Outside Track:Middle	Middle Track:Middle	Inside Track:Middle	Middle: Inside Track	Middle:Middle Track	Middle:Outside Track
Track Zone Ratio	7.5	1.38	1	1	1.38	7.5

