

2025年7月8日レーンコンディション



Oil Pattern Distance:	43 Feet	Reverse Brush Drop:	43 Feet	Oil Per Board:	40 uL
Forward Oil Total:	11.84 mL	Reverse Oil Total:	10.92 mL	Volume Oil Total:	22.76 mL
Forward Boards Crossed:	296 Boards	Reverse Boards Crossed:	273 Boards	Total Boards Crossed:	569 Boards

	Start	Stop	Loads	Speed	Crossed	Start	End	Feet	T.Oil
1	4L	4R	1	14	33	0.0	0.0	0.0	1320
2	6L	6R	1	14	29	0.0	1.9	1.9	1160
3	7L	7R	1	18	27	1.9	4.4	2.5	1080
4	8L	8R	3	18	75	4.4	12.0	7.6	3000
5	9L	9R	3	22	69	12.0	21.3	9.3	2760
6	10L	10R	3	22	63	21.3	30.6	9.3	2520
7	2L	2R	0	26	0	30.6	43.0	12.4	0

Forward Reverse More

	Start	Stop	Loads	Speed	Crossed	Start	End	Feet	T.Oil
1	2L	2R	0	30	0	43.0	36.0	-7.0	0
2	12L	12R	1	26	17	36.0	32.4	-3.6	680
3	11L	11R	1	26	19	32.4	28.8	-3.6	760
4	10L	10R	2	22	42	28.8	22.6	-6.2	1680
5	9L	9R	2	22	46	22.6	16.4	-6.2	1840
6	8L	8R	1	22	25	16.4	13.3	-3.1	1000
7	7L	7R	1	18	27	13.3	10.8	-2.5	1080
8	6L	6R	1	18	29	10.8	8.3	-2.5	1160
9	5L	5R	1	18	31	8.3	5.8	-2.5	1240
10	2L	2R	1	14	37	5.8	3.9	-1.9	1480
11	2L	2R	0	14	0	3.9	0.0	-3.9	0

Forward Reverse More

Conditioner:
Type In or Select
One

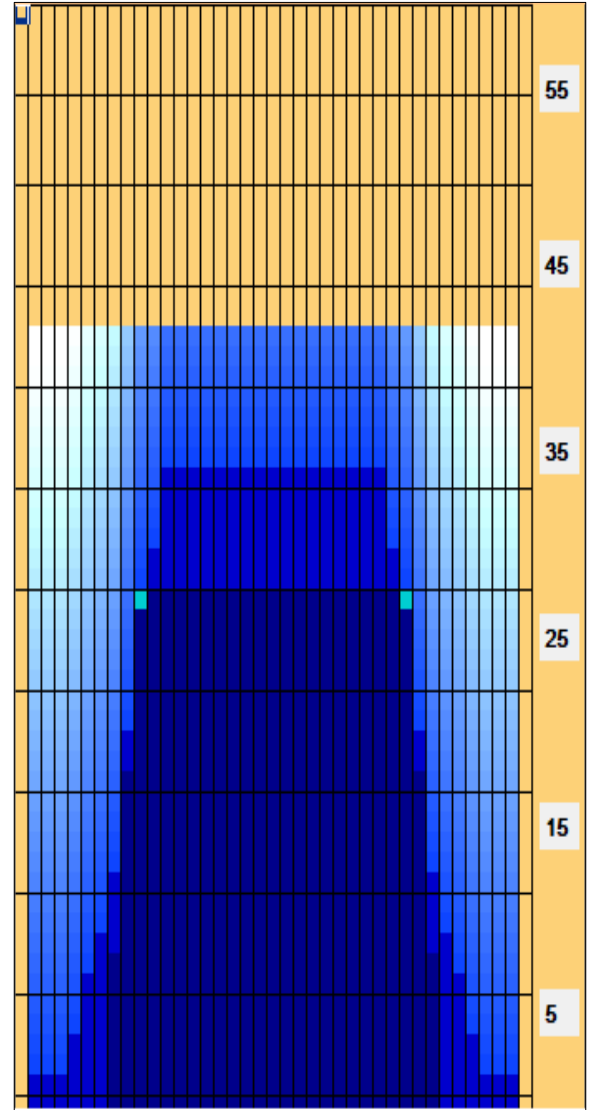
TransferType:
Type In or Select
One

Forward

Reverse

Combined

Buff



Item	3L-7L:18L-18R	8L-12L:18L-18R	13L-17L:18L-18R	18L-18R:17R-13R	18L-18R:12R-8R	18L-18R:7R-3R
Description	Outside Track:Middle	Middle Track:Middle	Inside Track:Middle	Middle: Inside Track	Middle:Middle Track	Middle:Outside Track
Track Zone Ratio	6.39	1.24	1	1	1.24	6.39

