

2019年 7-9月 1F デイリーコンディション



Oil Pattern Distance: 42 Feet **Reverse Brush Drop:** 42 Feet **Oil Per Board:** 40 uL
Forward Oil Total: 12.16 mL **Reverse Oil Total:** 10.64 mL **Volume Oil Total:** 22.8 mL
Forward Boards Crossed: 304 Boards **Reverse Boards Crossed:** 266 Boards **Total Boards Crossed:** 570 Boards

	Start	Stop	Loads	Speed	Crossed	Start	End	Feet	T.Oil
1	3L	3R	1	14	35	0.0	0.0	0.0	1400
2	6L	6R	1	18	29	0.0	2.5	2.5	1160
3	7L	7R	2	18	54	2.5	7.6	5.1	2160
4	9L	9R	2	22	46	7.6	13.8	6.2	1840
5	10L	10R	2	22	42	13.8	20.0	6.2	1680
6	11L	11R	2	22	38	20.0	26.2	6.2	1520
7	12L	12R	2	26	34	26.2	33.5	7.3	1360
8	14L	14R	2	26	26	33.5	40.8	7.3	1040
9	2L	2R	0	30	0	40.8	42.0	1.2	0

<< >> Forward Reverse More

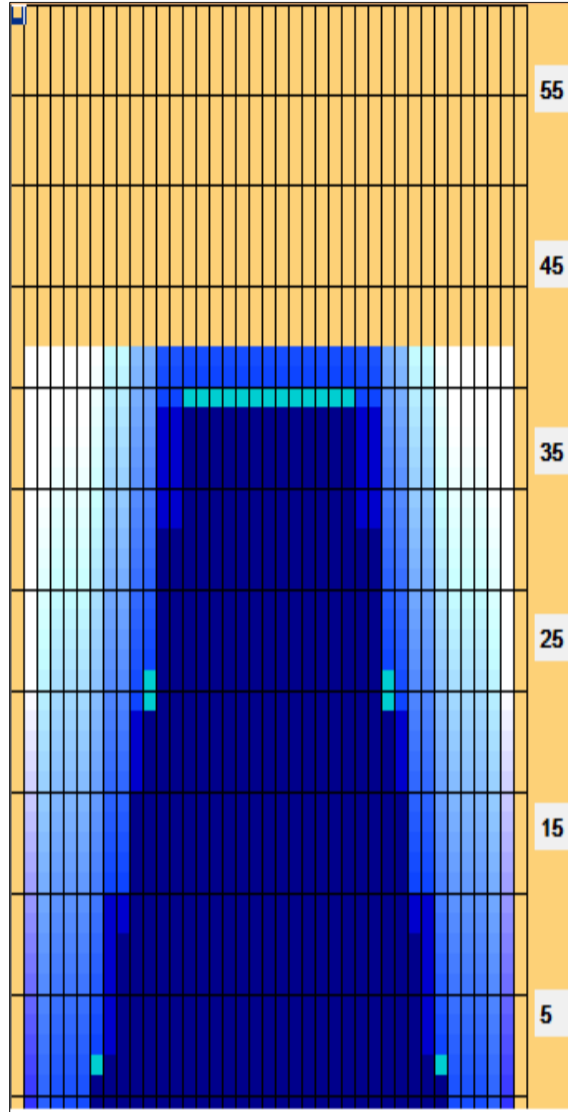
	Start	Stop	Loads	Speed	Crossed	Start	End	Feet	T.Oil
1	2L	2R	0	30	0	42.0	39.0	-3.0	0
2	12L	12R	4	26	68	39.0	24.3	-14.7	2720
3	10L	10R	3	22	63	24.3	15.0	-9.3	2520
4	8L	8R	3	22	75	15.0	5.7	-9.3	3000
5	7L	7R	1	18	27	5.7	3.2	-2.5	1080
6	4L	4R	1	14	33	3.2	1.3	-1.9	1320
7	2L	2R	0	14	0	1.3	0.0	-1.3	0

<< >> Forward Reverse More

Conditioner:
 Type In or Select
 One

 TransferType:
 Type In or Select
 One

- Forward
- Reverse
- Combined
- Buff



Item	3L-7L:18L-18R	8L-12L:18L-18R	13L-17L:18L-18R	18L-18R:17R-13R	18L-18R:12R-8R	18L-18R:7R-3R
Description	Outside Track:Middle	Middle Track:Middle	Inside Track:Middle	Middle:Inside Track	Middle:Middle Track	Middle:Outside Track
Track Zone Ratio	9.29	1.67	1.02	1.02	1.67	9.29

