

# 2019年 7月-9月 3 F デイリーコンディション



**Oil Pattern Distance:** 43 Feet      **Reverse Brush Drop:** 43 Feet      **Oil Per Board:** 50 uL  
**Forward Oil Total:** 17.45 mL      **Reverse Oil Total:** 10.65 mL      **Volume Oil Total:** 28.1 mL  
**Forward Boards Crossed:** 349 Boards      **Reverse Boards Crossed:** 213 Boards      **Total Boards Crossed:** 562 Boards

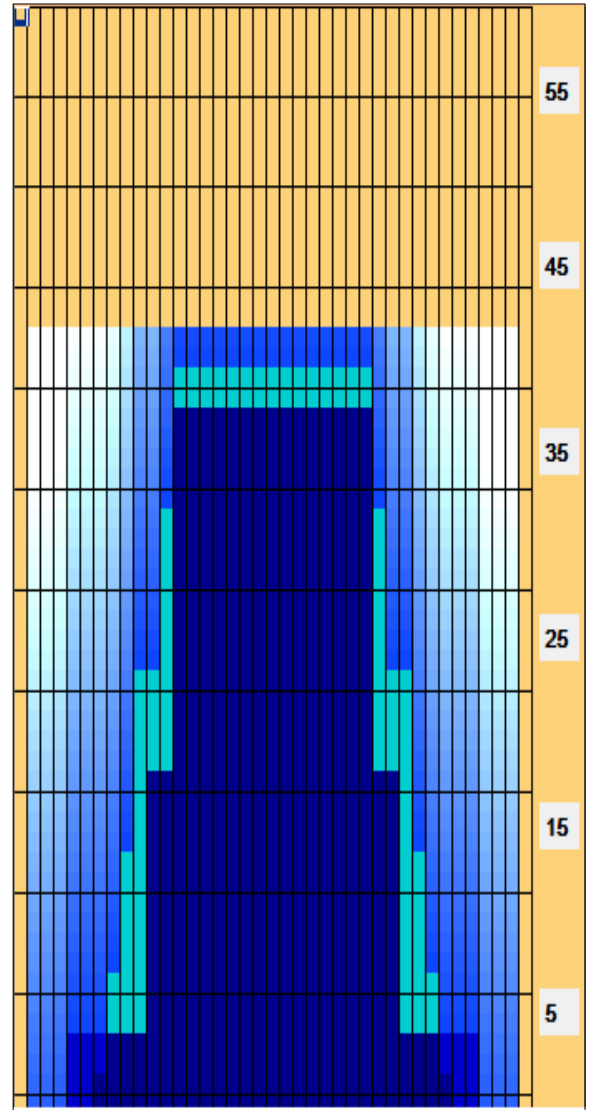
	Start	Stop	Loads	Speed	Crossed	Start	End	Feet	T.Oil
1	2L	2R	1	14	37	0.0	0.0	0.0	1850
2	4L	4R	1	14	33	0.0	1.9	1.9	1650
3	6L	6R	1	14	29	1.9	3.8	1.9	1450
4	7L	7R	1	18	27	3.8	6.3	2.5	1350
5	8L	8R	2	18	50	6.3	11.4	5.1	2500
6	9L	9R	2	22	46	11.4	17.6	6.2	2300
7	10L	10R	3	22	63	17.6	26.9	9.3	3150
8	12L	12R	2	26	34	26.9	34.2	7.3	1700
9	13L	13R	2	26	30	34.2	41.5	7.3	1500
10	2L	2R	0	30	0	41.5	43.0	1.5	0

	Start	Stop	Loads	Speed	Crossed	Start	End	Feet	T.Oil
1	2L	2R	0	30	0	43.0	39.0	-4.0	0
2	13L	13R	5	26	75	39.0	20.6	-18.4	3750
3	11L	11R	4	22	76	20.6	8.2	-12.4	3800
4	5L	5R	2	14	62	8.2	4.3	-3.9	3100
5	2L	2R	0	14	0	4.3	0.0	-4.3	0

Conditioner:  
Type In or Select One

TransferType:  
Type In or Select One

- Forward
- Reverse
- Combined
- Buff



Item	3L-7L:18L-18R	8L-12L:18L-18R	13L-17L:18L-18R	18L-18R:17R-13R	18L-18R:12R-8R	18L-18R:7R-3R
Description	Outside Track:Middle	Middle Track:Middle	Inside Track:Middle	Middle:Inside Track	Middle:Middle Track	Middle:Outside Track
Track Zone Ratio	7.22	1.94	1	1	1.94	7.22

