

2020年 9.10月1階 11.12月3階 デイリー



Oil Pattern Distance:	44 Feet	Reverse Brush Drop:	34 Feet	Oil Per Board:	50 uL
Forward Oil Total:	17.2 mL	Reverse Oil Total:	8.7 mL	Volume Oil Total:	25.9 mL
Forward Boards Crossed:	344 Boards	Reverse Boards Crossed:	174 Boards	Total Boards Crossed:	518 Boards

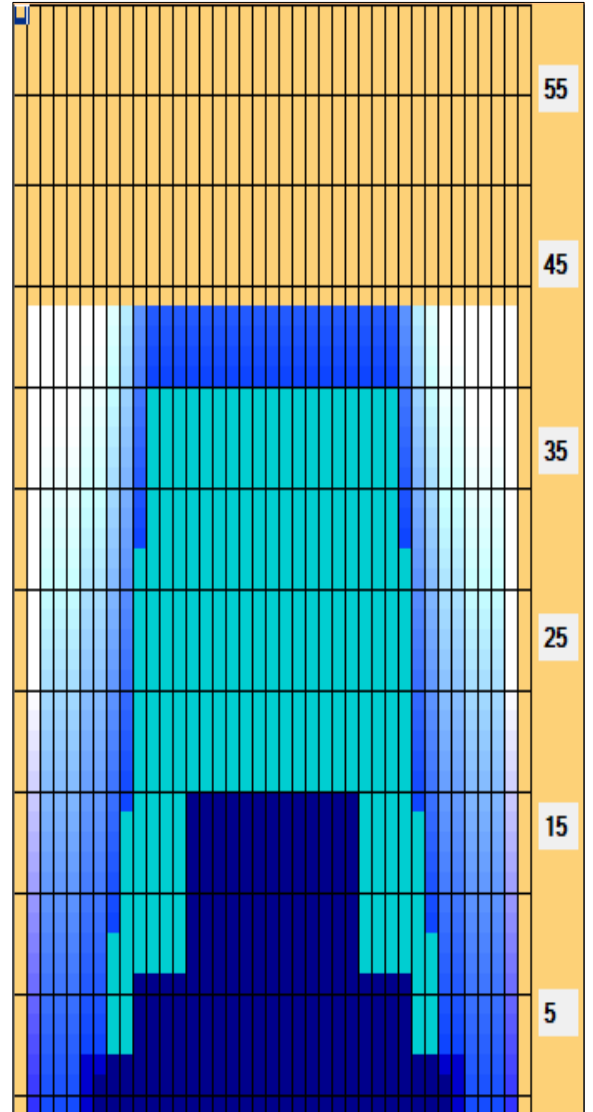
	Start	Stop	Loads	Speed	Crossed	Start	End	Feet	T.Oil
1	3L	3R	2	14	70	0.0	1.9	1.9	3500
2	6L	6R	1	18	29	1.9	4.4	2.5	1450
3	7L	7R	1	18	27	4.4	6.9	2.5	1350
4	8L	8R	2	22	50	6.9	13.1	6.2	2500
5	9L	9R	2	22	46	13.1	19.3	6.2	2300
6	10L	10R	2	22	42	19.3	25.5	6.2	2100
7	10L	10R	2	26	42	25.5	32.8	7.3	2100
8	11L	11R	2	26	38	32.8	40.1	7.3	1900
9	2L	2R	0	30	0	40.1	44.0	3.9	0

Conditioner:
Type In or Select One

TransferType:
Type In or Select One

Forward
Reverse
Combined
Buff

	Start	Stop	Loads	Speed	Crossed	Start	End	Feet	T.Oil
1	2L	2R	0	30	0	44.0	20.0	-24.0	0
2	14L	14R	3	22	39	20.0	10.7	-9.3	1950
3	10L	10R	2	14	42	10.7	6.8	-3.9	2100
4	6L	6R	2	14	58	6.8	2.9	-3.9	2900
5	3L	3R	1	14	35	2.9	1.0	-1.9	1750
6	2L	2R	0	14	0	1.0	0.0	-1.0	0



Item	3L-7L:18L-18R	8L-12L:18L-18R	13L-17L:18L-18R	18L-18R:17R-13R	18L-18R:12R-8R	18L-18R:7R-3R
Description	Outside Track:Middle	Middle Track:Middle	Inside Track:Middle	Middle: Inside Track	Middle:Middle Track	Middle:Outside Track
Track Zone Ratio	5	1.47	1.03	1.03	1.47	5

