

2021年 1-2月1階 3-4月3階 デイリー



Oil Pattern Distance:	42 Feet	Reverse Brush Drop:	42 Feet	Oil Per Board:	45 uL
Forward Oil Total:	14.58 mL	Reverse Oil Total:	9.945 mL	Volume Oil Total:	24.525 mL
Forward Boards Crossed:	324 Boards	Reverse Boards Crossed:	221 Boards	Total Boards Crossed:	545 Boards

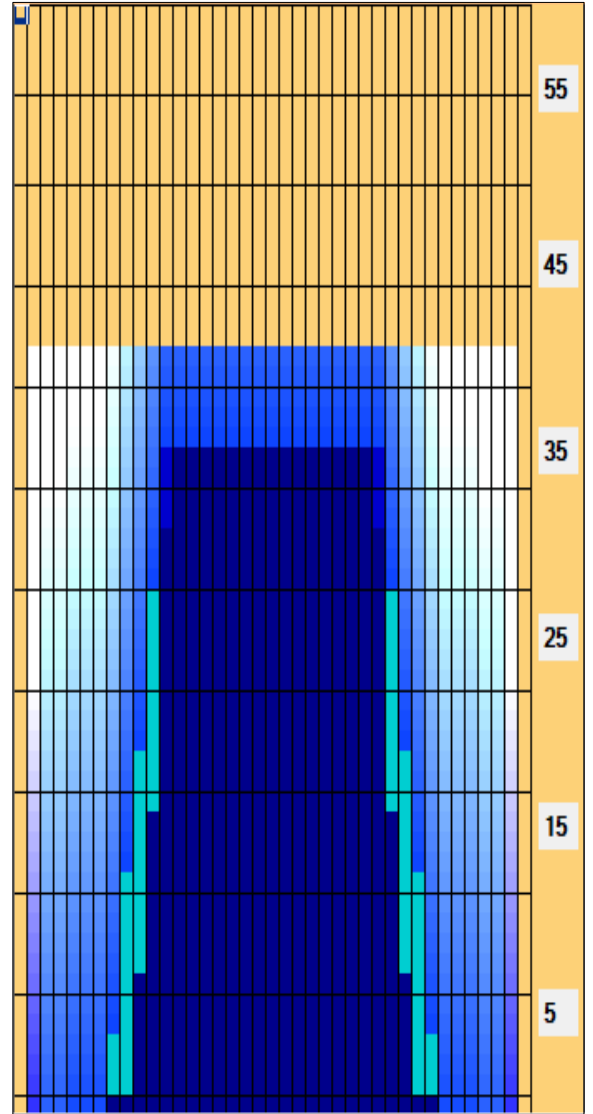
	Start	Stop	Loads	Speed	Crossed	Start	End	Feet	T.Oil
1	3L	3R	1	14	35	0.0	0.0	0.0	1575
2	5L	5R	1	14	31	0.0	1.9	1.9	1395
3	7L	7R	1	14	27	1.9	3.8	1.9	1215
4	8L	8R	2	18	50	3.8	8.9	5.1	2250
5	9L	9R	3	18	69	8.9	16.5	7.6	3105
6	10L	10R	2	22	42	16.5	22.7	6.2	1890
7	11L	11R	2	26	38	22.7	30.0	7.3	1710
8	12L	12R	1	26	17	30.0	33.6	3.6	765
9	13L	13R	1	26	15	33.6	37.2	3.6	675
10	2L	2R	0	30	0	37.2	42.0	4.8	0

Conditioner:
Type In or Select One

TransferType:
Type In or Select One

Forward
Reverse
Combined
Buff

	Start	Stop	Loads	Speed	Crossed	Start	End	Feet	T.Oil
1	2L	2R	0	30	0	42.0	37.0	-5.0	0
2	12L	12R	5	26	85	37.0	18.6	-18.4	3825
3	11L	11R	2	26	38	18.6	11.3	-7.3	1710
4	10L	10R	2	22	42	11.3	5.1	-6.2	1890
5	8L	8R	1	18	25	5.1	2.6	-2.5	1125
6	5L	5R	1	10	31	2.6	1.2	-1.4	1395
7	2L	2R	0	14	0	1.2	0.0	-1.2	0



Item	3L-7L:18L-18R	8L-12L:18L-18R	13L-17L:18L-18R	18L-18R:17R-13R	18L-18R:12R-8R	18L-18R:7R-3R
Description	Outside Track:Middle	Middle Track:Middle	Inside Track:Middle	Middle: Inside Track	Middle:Middle Track	Middle:Outside Track
Track Zone Ratio	1042	1.71	1	1	1.71	1042

