

# 2021年 5.6月3階 7.8月1階 デイリー



<b>Oil Pattern Distance:</b>	<b>38 Feet</b>	<b>Reverse Brush Drop:</b>	<b>38 Feet</b>	<b>Oil Per Board:</b>	<b>50 uL</b>
<b>Forward Oil Total:</b>	<b>19.3 mL</b>	<b>Reverse Oil Total:</b>	<b>12.2 mL</b>	<b>Volume Oil Total:</b>	<b>31.5 mL</b>
<b>Forward Boards Crossed:</b>	<b>386 Boards</b>	<b>Reverse Boards Crossed:</b>	<b>244 Boards</b>	<b>Total Boards Crossed:</b>	<b>630 Boards</b>

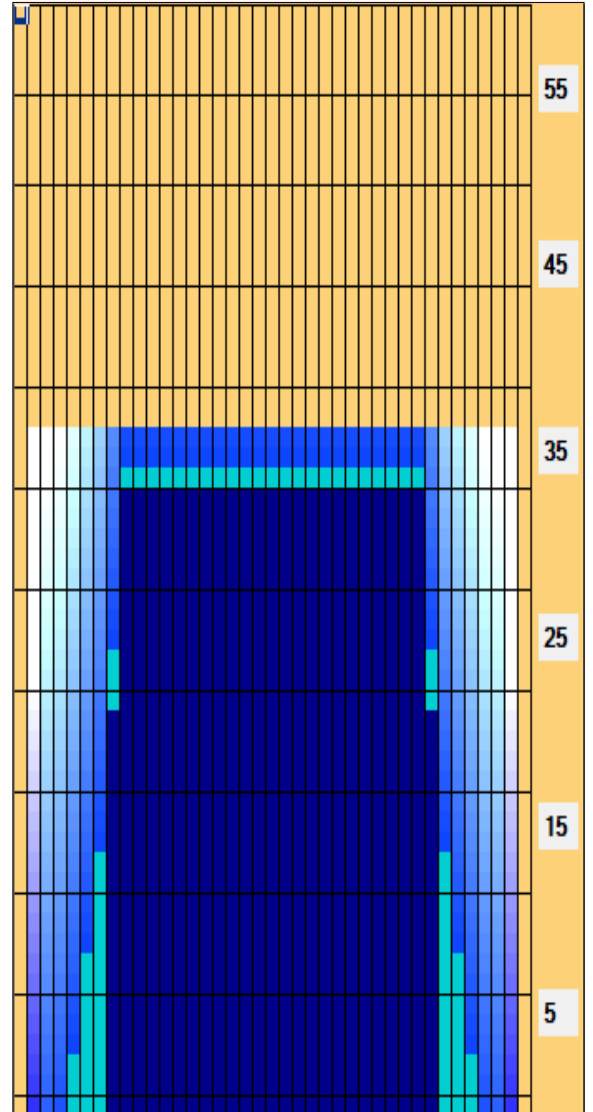
	Start	Stop	Loads	Speed	Crossed	Start	End	Feet	T.Oil
1	3L	3R	1	14	35	0.0	0.0	0.0	1750
2	4L	4R	1	18	33	0.0	2.5	2.5	1650
3	5L	5R	2	18	62	2.5	7.6	5.1	3100
4	6L	6R	2	18	58	7.6	12.7	5.1	2900
5	7L	7R	2	18	54	12.7	17.8	5.1	2700
6	8L	8R	3	22	75	17.8	27.1	9.3	3750
7	9L	9R	3	22	69	27.1	36.4	9.3	3450
8	2L	2R	0	30	0	36.4	38.0	1.6	0

Conditioner:  
Type In or Select One

TransferType:  
Type In or Select One

Forward  
Reverse  
Combined  
Buff

	Start	Stop	Loads	Speed	Crossed	Start	End	Feet	T.Oil
1	2L	2R	0	30	0	38.0	35.0	-3.0	0
2	9L	9R	3	26	69	35.0	24.0	-11.0	3450
3	8L	8R	4	22	100	24.0	11.6	-12.4	5000
4	8L	8R	3	18	75	11.6	4.0	-7.6	3750
5	2L	2R	0	14	0	4.0	0.0	-4.0	0



Item Description	3L-7L:18L-18R Outside Track:Middle	8L-12L:18L-18R Middle Track:Middle	13L-17L:18L-18R Inside Track:Middle	18L-18R:17R-13R Middle: Inside Track	18L-18R:12R-8R Middle:Middle Track	18L-18R:7R-3R Middle:Outside Track
Track Zone Ratio	5.71	1.05	1	1	1.05	5.71

