

# 2021年9.10月 1階 11.12月 3階 デイリー



<b>Oil Pattern Distance:</b>	<b>44 Feet</b>	<b>Reverse Brush Drop:</b>	<b>42 Feet</b>	<b>Oil Per Board:</b>	<b>50 uL</b>
<b>Forward Oil Total:</b>	<b>15.55 mL</b>	<b>Reverse Oil Total:</b>	<b>9.5 mL</b>	<b>Volume Oil Total:</b>	<b>25.05 mL</b>
<b>Forward Boards Crossed:</b>	<b>311 Boards</b>	<b>Reverse Boards Crossed:</b>	<b>190 Boards</b>	<b>Total Boards Crossed:</b>	<b>501 Boards</b>

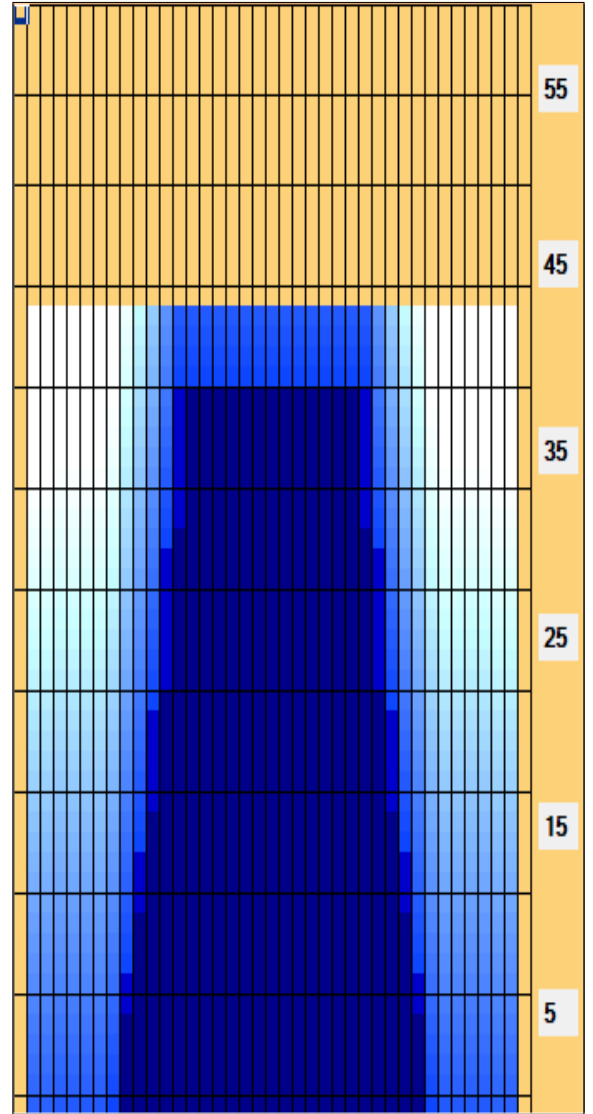
	Start	Stop	Loads	Speed	Crossed	Start	End	Feet	T.Oil
1	2L	2R	1	14	37	0.0	0.0	0.0	1850
2	4L	4R	1	14	33	0.0	1.9	1.9	1650
3	8L	8R	1	18	25	1.9	4.4	2.5	1250
4	9L	9R	2	18	46	4.4	9.5	5.1	2300
5	10L	10R	2	18	42	9.5	14.6	5.1	2100
6	11L	11R	2	18	38	14.6	19.7	5.1	1900
7	12L	12R	2	22	34	19.7	25.9	6.2	1700
8	13L	13R	2	26	30	25.9	33.2	7.3	1500
9	14L	14R	2	26	26	33.2	40.5	7.3	1300
10	2L	2R	0	30	0	40.5	44.0	3.5	0

Conditioner:  
Type In or Select One

TransferType:  
Type In or Select One

Forward  
Reverse  
Combined  
Buff

	Start	Stop	Loads	Speed	Crossed	Start	End	Feet	T.Oil
1	2L	2R	0	30	0	44.0	40.0	-4.0	0
2	13L	13R	2	30	30	40.0	31.5	-8.5	1500
3	12L	12R	2	26	34	31.5	24.2	-7.3	1700
4	11L	11R	2	26	38	24.2	16.9	-7.3	1900
5	10L	10R	2	22	42	16.9	10.7	-6.2	2100
6	9L	9R	2	18	46	10.7	5.6	-5.1	2300
7	2L	2R	0	14	0	5.6	0.0	-5.6	0



Item Description	3L-7L:18L-18R Outside Track:Middle	8L-12L:18L-18R Middle Track:Middle	13L-17L:18L-18R Inside Track:Middle	18L-18R:17R-13R Middle: Inside Track	18L-18R:12R-8R Middle:Middle Track	18L-18R:7R-3R Middle:Outside Track
Track Zone Ratio	13.89	2.27	1.02	1.02	2.27	13.89

