

2022年 1.2月 1階 3.4月 3階 デイリー



Oil Pattern Distance:	50 Feet	Reverse Brush Drop:	44 Feet	Oil Per Board:	50 uL
Forward Oil Total:	17 mL	Reverse Oil Total:	7.35 mL	Volume Oil Total:	24.35 mL
Forward Boards Crossed:	340 Boards	Reverse Boards Crossed:	147 Boards	Total Boards Crossed:	487 Boards

	Start	Stop	Loads	Speed	Crossed	Start	End	Feet	T.Oil
1	3L	3R	2	14	70	0.0	1.9	1.9	3500
2	6L	6R	2	14	58	1.9	5.8	3.9	2900
3	9L	9R	3	14	69	5.8	11.7	5.9	3450
4	11L	11R	4	22	76	11.7	24.1	12.4	3800
5	13L	13R	3	26	45	24.1	35.1	11.0	2250
6	15L	15R	2	26	22	35.1	42.4	7.3	1100
7	2L	2R	0	30	0	42.4	50.0	7.6	0

Conditioner:
Type In or Select One

TransferType:
Type In or Select One

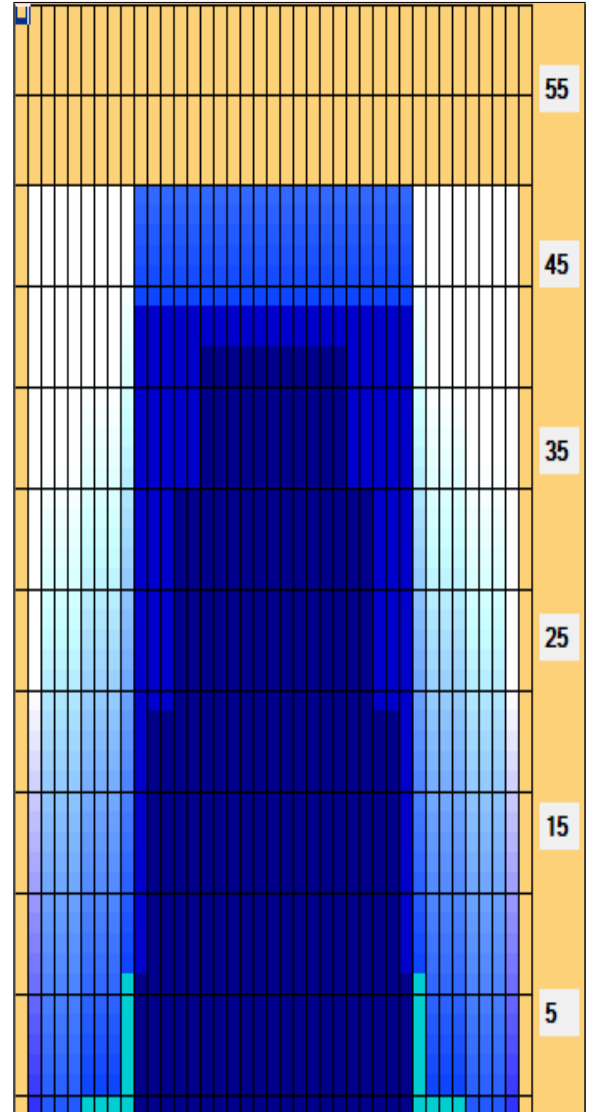
Forward
Reverse
More

	Start	Stop	Loads	Speed	Crossed	Start	End	Feet	T.Oil
1	2L	2R	0	30	0	50.0	44.0	-6.0	0
2	10L	10R	7	30	147	44.0	14.3	-29.7	7350
3	2L	2R	0	18	0	14.3	4.0	-10.3	0
4	2L	2R	0	14	0	4.0	0.0	-4.0	0

Forward
Reverse
More

Conditioner:
Type In or Select One

TransferType:
Type In or Select One



Item Description	3L-7L:18L-18R Outside Track:Middle	8L-12L:18L-18R Middle Track:Middle	13L-17L:18L-18R Inside Track:Middle	18L-18R:17R-13R Middle: Inside Track	18L-18R:12R-8R Middle:Middle Track	18L-18R:7R-3R Middle:Outside Track
Track Zone Ratio	8.21	1.89	1.04	1.04	1.89	8.21

