

2024年5.6月3階 7.8月1階 デイリーパターン



Oil Pattern Distance:	41 Feet	Reverse Brush Drop:	33 Feet	Oil Per Board:	50 uL
Forward Oil Total:	16.75 mL	Reverse Oil Total:	8.75 mL	Volume Oil Total:	25.5 mL
Forward Boards Crossed:	335 Boards	Reverse Boards Crossed:	175 Boards	Total Boards Crossed:	510 Boards

	Start	Stop	Loads	Speed	Crossed	Start	End	Feet	T.Oil
1	2L	2R	1	14	37	0.0	0.0	0.0	1850
2	4L	4R	1	14	33	0.0	1.9	1.9	1650
3	5L	5R	2	18	62	1.9	7.0	5.1	3100
4	6L	6R	1	22	29	7.0	10.1	3.1	1450
5	9L	9R	3	22	69	10.1	19.4	9.3	3450
6	10L	10R	3	26	63	19.4	30.4	11.0	3150
7	10L	10R	2	30	42	30.4	38.9	8.5	2100
8	2L	2R	0	30	0	38.9	41.0	2.1	0

Navigation: Forward Reverse More

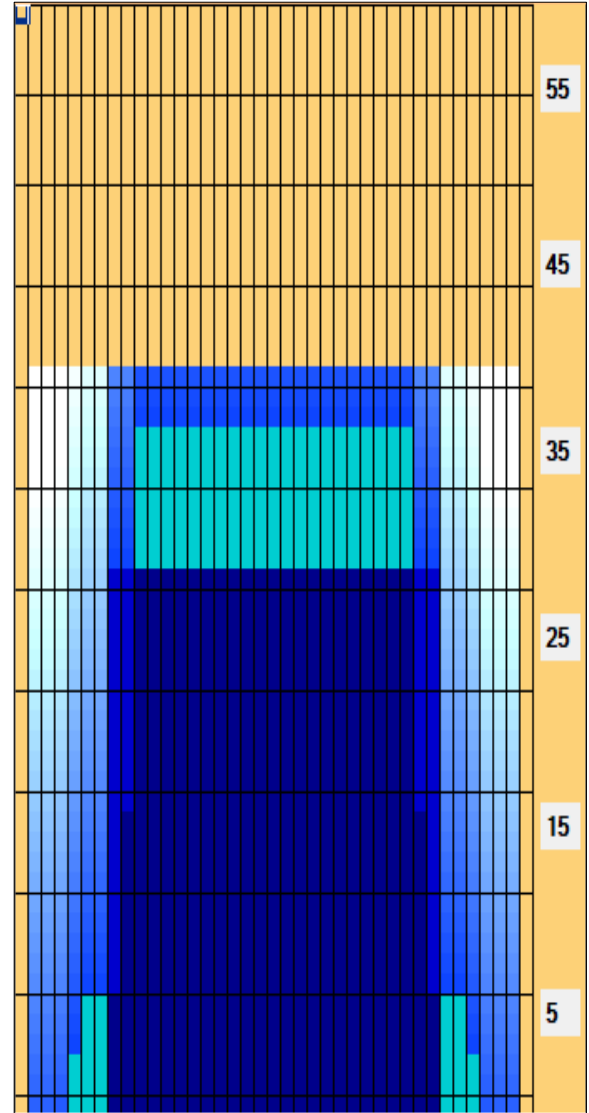
	Start	Stop	Loads	Speed	Crossed	Start	End	Feet	T.Oil
1	2L	2R	0	30	0	41.0	31.0	-10.0	0
2	8L	8R	3	30	75	31.0	18.3	-12.7	3750
3	8L	8R	2	26	50	18.3	11.0	-7.3	2500
4	8L	8R	2	18	50	11.0	5.9	-5.1	2500
5	2L	2R	0	14	0	5.9	0.0	-5.9	0

Navigation: Forward Reverse More

Conditioner:
Type In or Select One

TransferType:
Type In or Select One

- Forward
- Reverse
- Combined
- Buff



Item	3L-7L:18L-18R	8L-12L:18L-18R	13L-17L:18L-18R	18L-18R:17R-13R	18L-18R:12R-8R	18L-18R:7R-3R
Description	Outside Track:Middle	Middle Track:Middle	Inside Track:Middle	Middle: Inside Track	Middle:Middle Track	Middle:Outside Track
Track Zone Ratio	5.88	1.15	1	1	1.15	5.88

