

2026年 3.4月デイリー



Oil Pattern Distance:	41 Feet	Reverse Brush Drop:	36 Feet	Oil Per Board:	50 uL
Forward Oil Total:	15.45 mL	Reverse Oil Total:	9.15 mL	Volume Oil Total:	24.6 mL
Forward Boards Crossed:	309 Boards	Reverse Boards Crossed:	183 Boards	Total Boards Crossed:	492 Boards

	Start	Stop	Loads	Speed	Crossed	Start	End	Feet	T.Oil
1	2L	2R	1	14	37	0.0	0.0	0.0	1850
2	5L	5R	1	14	31	0.0	1.9	1.9	1550
3	7L	7R	2	14	54	1.9	5.8	3.9	2700
4	8L	8R	2	18	50	5.8	10.9	5.1	2500
5	9L	9R	3	18	69	10.9	18.5	7.6	3450
6	11L	11R	2	18	38	18.5	23.6	5.1	1900
7	13L	13R	2	22	30	23.6	29.8	6.2	1500
8	2L	2R	0	30	0	29.8	41.0	11.2	0

Navigation: Forward Reverse More

	Start	Stop	Loads	Speed	Crossed	Start	End	Feet	T.Oil
1	2L	2R	0	30	0	41.0	36.0	-5.0	0
2	14L	14R	1	26	13	36.0	32.4	-3.6	650
3	11L	11R	3	26	57	32.4	21.4	-11.0	2850
4	10L	10R	3	22	63	21.4	12.1	-9.3	3150
5	8L	8R	2	22	50	12.1	5.9	-6.2	2500
6	2L	2R	0	22	0	5.9	0.0	-5.9	0

Navigation: Forward Reverse More

Conditioner:
Type In or Select One

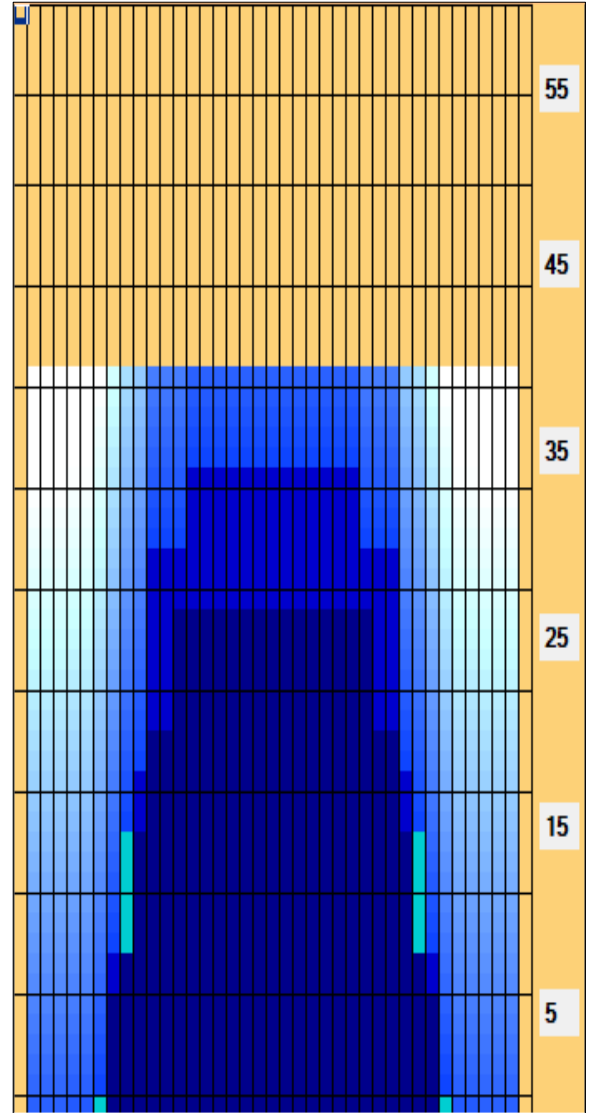
TransferType:
Type In or Select One

Forward

Reverse

Combined

Buff



Item Description	3L-7L:18L-18R Outside Track:Middle	8L-12L:18L-18R Middle Track:Middle	13L-17L:18L-18R Inside Track:Middle	18L-18R:17R-13R Middle: Inside Track	18L-18R:12R-8R Middle:Middle Track	18L-18R:7R-3R Middle:Outside Track
Track Zone Ratio	11	1.55	1.01	1.01	1.55	11

