

2026年7,8月 デイリーコンディション



Oil Pattern Distance:	38 Feet	Reverse Brush Drop:	38 Feet	Oil Per Board:	50 uL
Forward Oil Total:	13.8 mL	Reverse Oil Total:	7.85 mL	Volume Oil Total:	21.65 mL
Forward Boards Crossed:	276 Boards	Reverse Boards Crossed:	157 Boards	Total Boards Crossed:	433 Boards

	Start	Stop	Loads	Speed	Crossed	Start	End	Feet	T.Oil
1	2L	2R	1	14	37	0.0	0.0	0.0	1850
2	6L	6R	1	18	29	0.0	2.5	2.5	1450
3	8L	8R	2	18	50	2.5	7.6	5.1	2500
4	9L	9R	2	22	46	7.6	13.8	6.2	2300
5	10L	10R	3	26	63	13.8	24.8	11.0	3150
6	12L	12R	3	26	51	24.8	35.8	11.0	2550
7	2L	2R	0	30	0	35.8	38.0	2.2	0

Navigation: Forward Reverse More

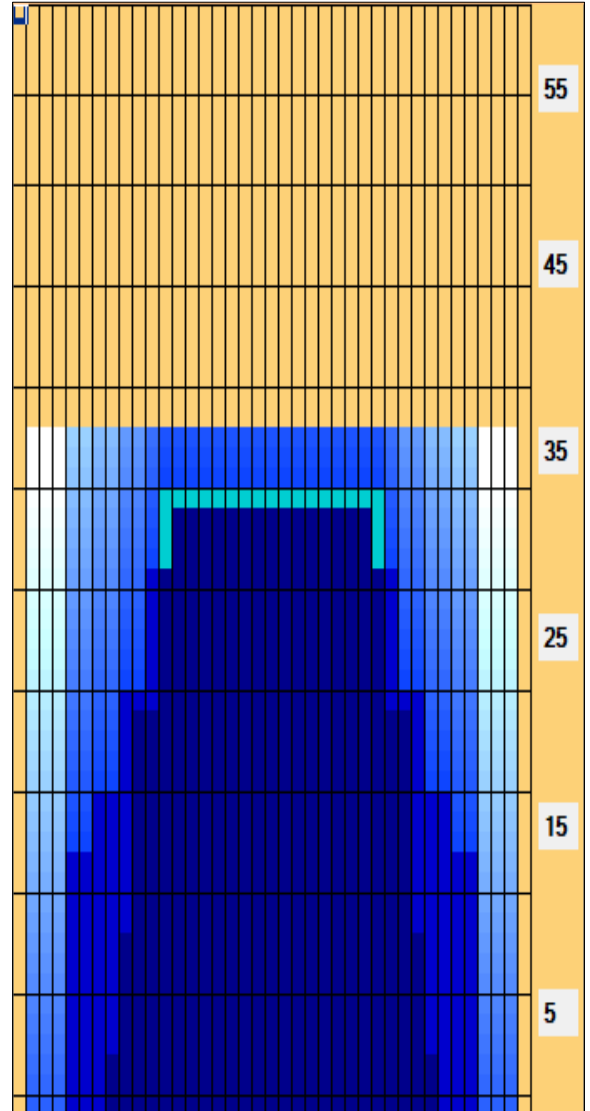
	Start	Stop	Loads	Speed	Crossed	Start	End	Feet	T.Oil
1	2L	2R	0	30	0	38.0	34.0	-4.0	0
2	13L	13R	1	22	15	34.0	30.9	-3.1	750
3	11L	11R	2	22	38	30.9	24.7	-6.2	1900
4	9L	9R	2	18	46	24.7	19.6	-5.1	2300
5	7L	7R	1	18	27	19.6	17.1	-2.5	1350
6	5L	5R	1	18	31	17.1	14.6	-2.5	1550
7	2L	2R	0	14	0	14.6	0.0	-14.6	0

Navigation: Forward Reverse More

Conditioner:
Type In or Select One

TransferType:
Type In or Select One

- Forward
- Reverse
- Combined
- Buff



Item	3L-7L:18L-18R	8L-12L:18L-18R	13L-17L:18L-18R	18L-18R:17R-13R	18L-18R:12R-8R	18L-18R:7R-3R
Description	Outside Track:Middle	Middle Track:Middle	Inside Track:Middle	Middle: Inside Track	Middle:Middle Track	Middle:Outside Track
Track Zone Ratio	8.64	1.53	1	1	1.53	8.64

