

tokorozawaSL Nov. 2014 (40ft ver. Program #3)



Oil Pattern Distance: 40 Feet **Reverse Brush Drop:** 40 Feet **Oil Per Board:** 40 uL
Forward Oil Total: 13.56 mL **Reverse Oil Total:** 11.48 mL **Volume Oil Total:** 25.04 mL
Forward Boards Crossed: 339 Boards **Reverse Boards Crossed:** 287 Boards **Total Boards Crossed:** 626 Boards

	Start	Stop	Loads	Speed	Crossed	Start	End	Feet	T.Oil
1	2L	2R	2	10	74	0.0	1.4	1.4	2960
2	6L	6R	2	14	58	1.4	5.3	3.9	2320
3	8L	8R	1	14	25	5.3	7.2	1.9	1000
4	9L	9R	1	14	23	7.2	9.1	1.9	920
5	10L	10R	2	14	42	9.1	13.0	3.9	1680
6	11L	11R	2	18	38	13.0	18.1	5.1	1520
7	12L	12R	2	18	34	18.1	23.2	5.1	1360
8	13L	13R	3	18	45	23.2	30.8	7.6	1800
9	2L	2R	0	30	0	30.8	40.0	9.2	0

Navigation: Forward Reverse More

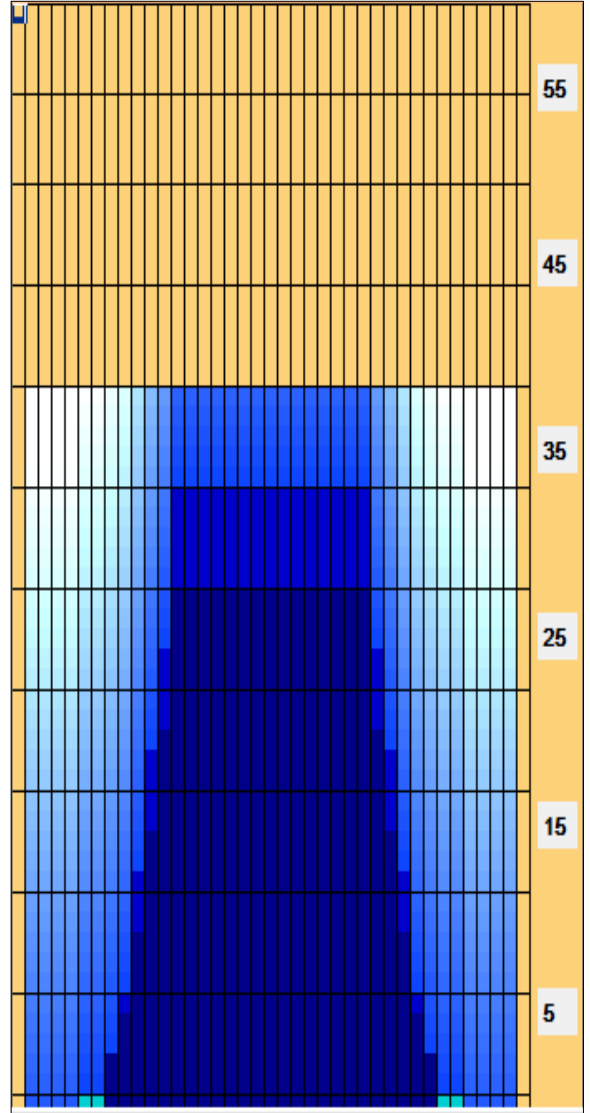
	Start	Stop	Loads	Speed	Crossed	Start	End	Feet	T.Oil
1	2L	2R	0	30	0	40.0	35.0	-5.0	0
2	13L	13R	3	18	45	35.0	27.4	-7.6	1800
3	12L	12R	3	14	51	27.4	21.5	-5.9	2040
4	11L	11R	3	14	57	21.5	15.6	-5.9	2280
5	10L	10R	3	14	63	15.6	9.7	-5.9	2520
6	9L	9R	2	10	46	9.7	6.9	-2.8	1840
7	8L	8R	1	10	25	6.9	5.5	-1.4	1000
8	2L	2R	0	10	0	5.5	0.0	-5.5	0

Navigation: Forward Reverse More

Conditioner:
Type In or Select One

TransferType:
Type In or Select One

- Forward
- Reverse
- Combined
- Buff



TRANSFER BRUSH SYSTEM Program #3

Item	3L-7L:18L-18R	8L-12L:18L-18R	13L-17L:18L-18R	18L-18R:17R-13R	18L-18R:12R-8R	18L-18R:7R-3R
Description	Outside Track:Middle	Middle Track:Middle	Inside Track:Middle	Middle:Inside Track	Middle:Middle Track	Middle:Outside Track
Track Zone Ratio	10.71	2.08	1	1	2.08	10.71

